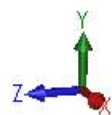
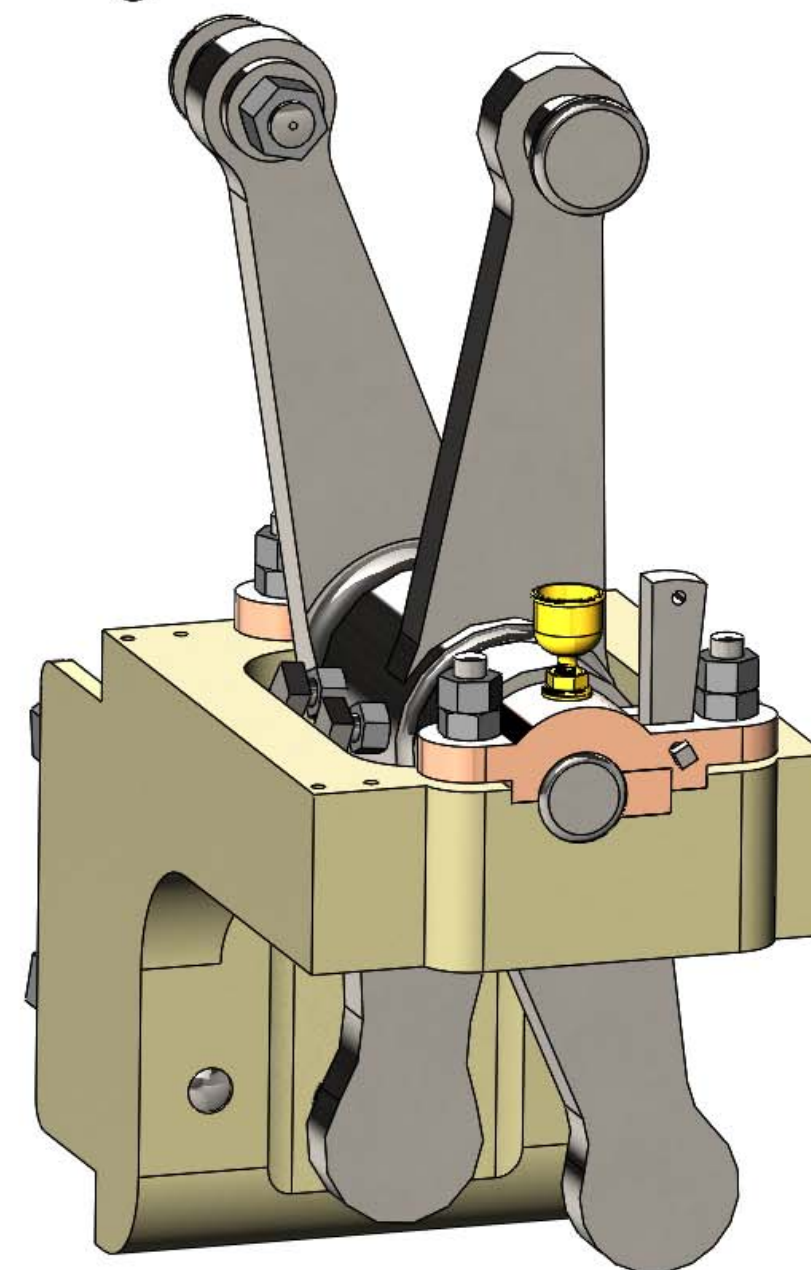
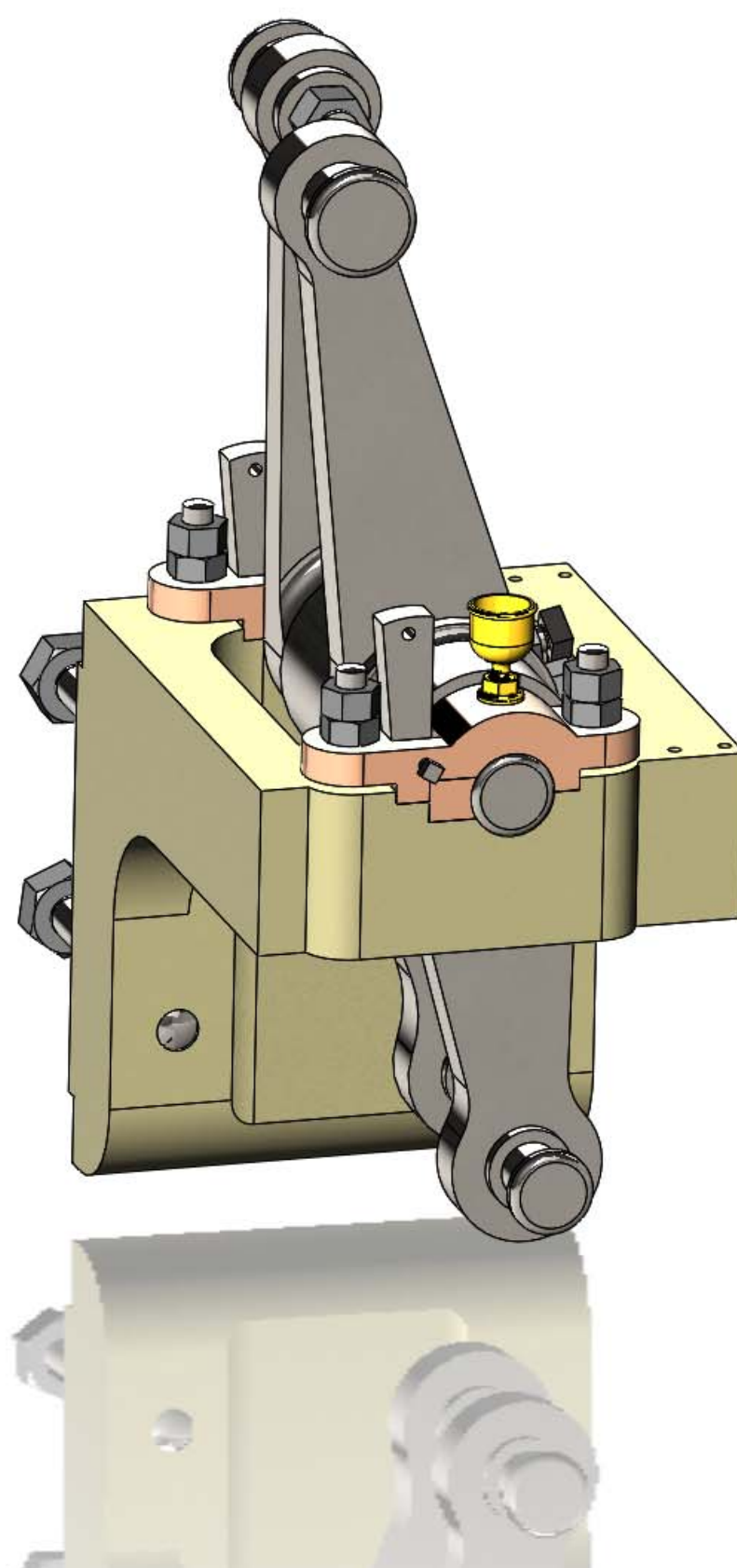
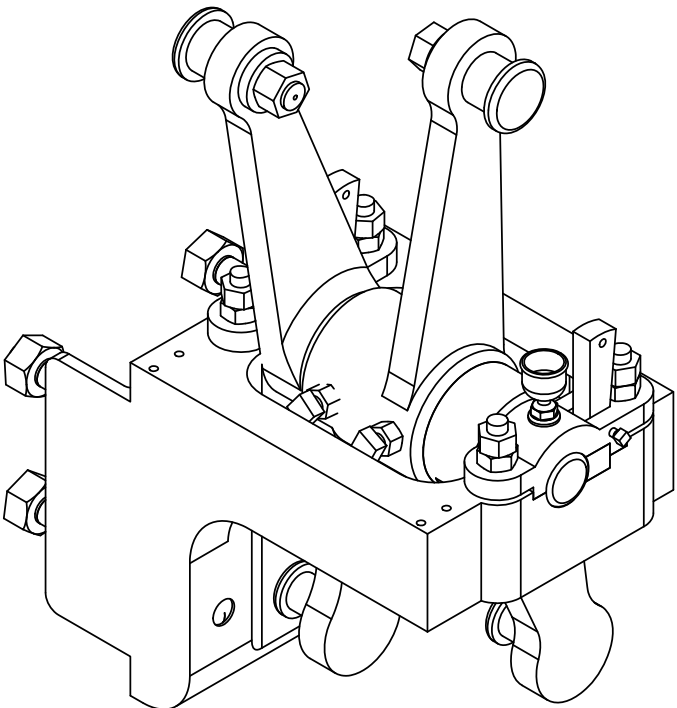
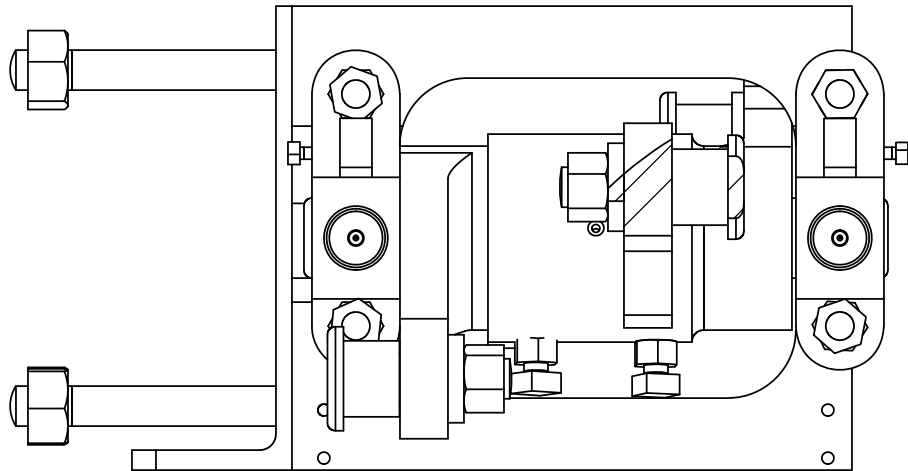


# Translator Assembly

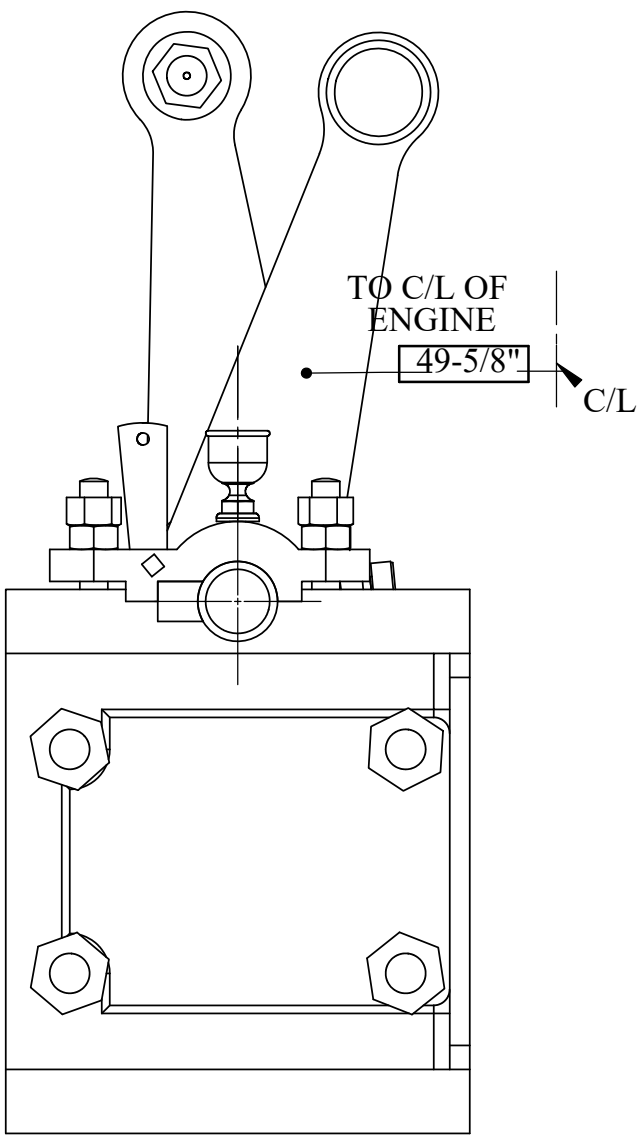
# TA



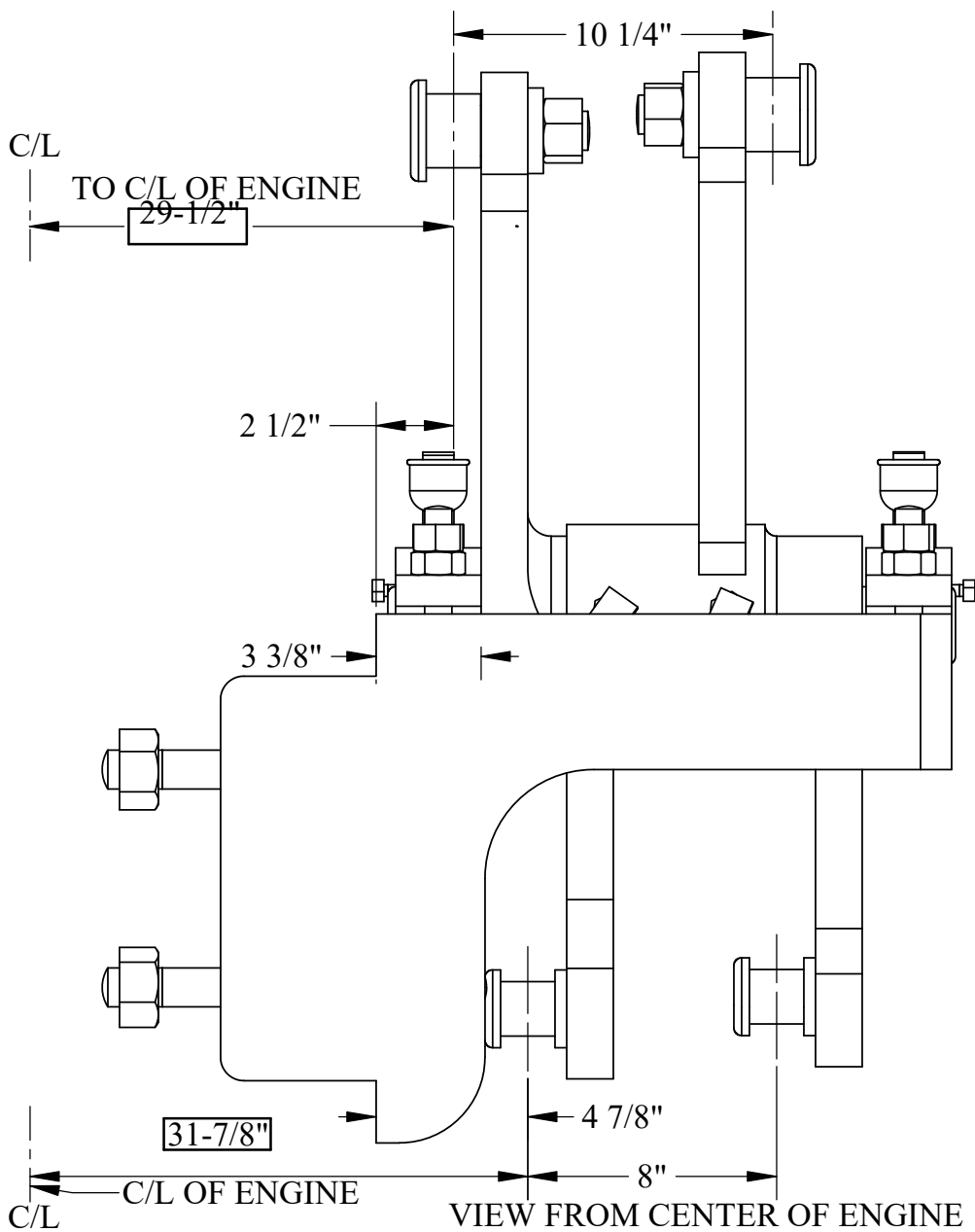
TOP VIEW



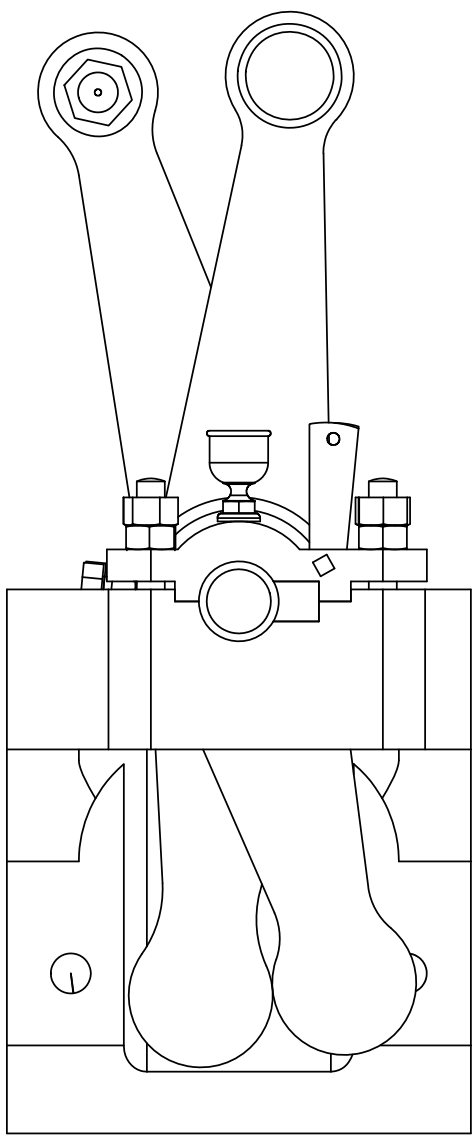
SCALE 1: 8



VIEW FROM AFT



VIEW FROM CENTER OF ENGINE



FRONT VIEW

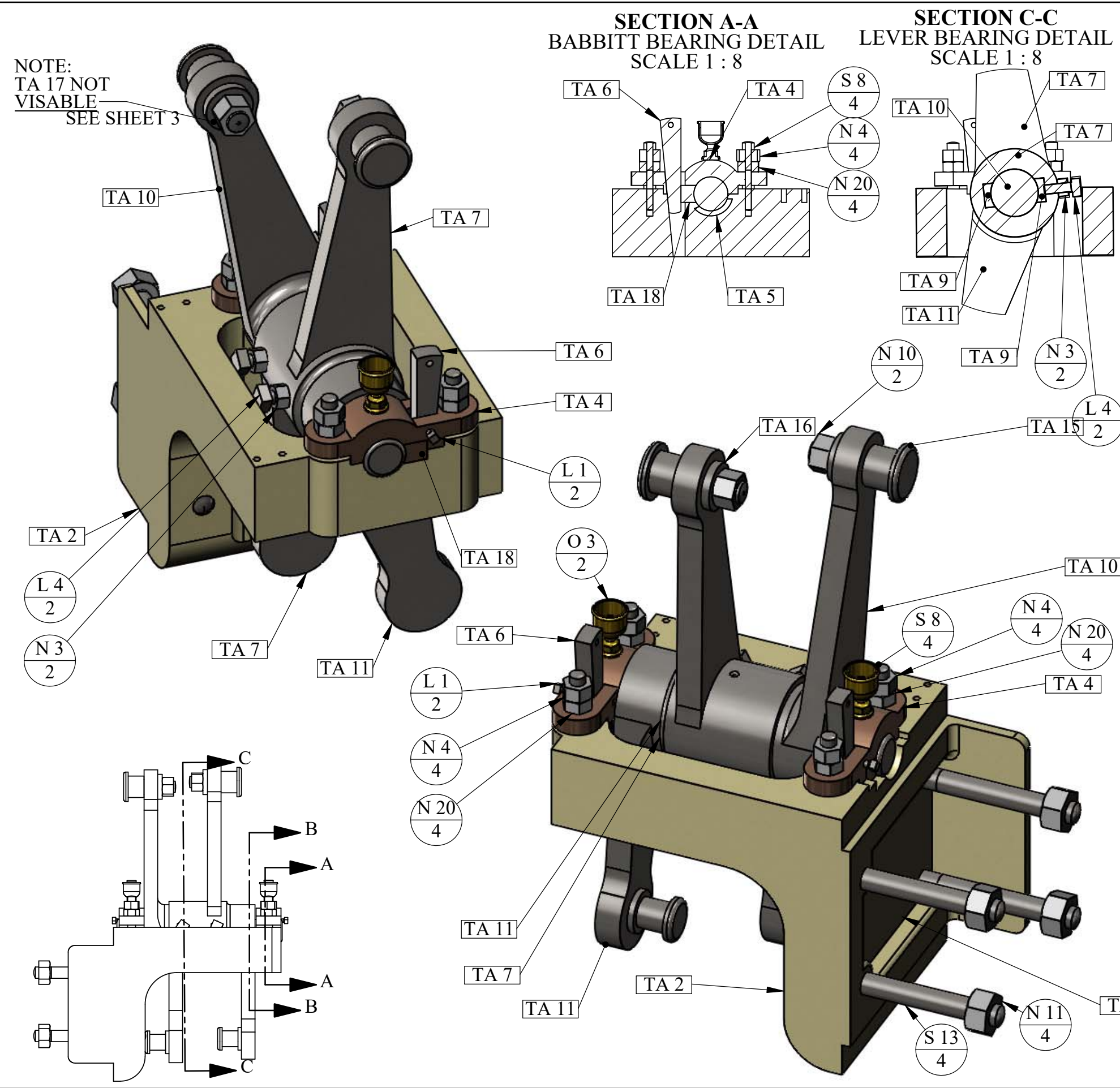
**NOTE:**  
**PART DETAILS AND BILL OF**  
**MATERIAL ON SHEET 2**

**FULL CROSSECTION**  
**ON SHEET 3**

**DO NOT SCALE DIMENSIONS**  
**SHOWN IN BOXES**

**U.S.S. Monitor Steam Engine**

Material	Drawn By - Date	Sub-Assembly
Weight (Lbs)	RWC 12-2018	Translator Assembly
591.98	Description	<b>Port Translator</b> <b>Assembly</b>
Scale		
1:6		
Part #		
TA 1-P		SHEET 1 OF 3



PART NUMBER	DESCRIPTION	QTY.
TA 2	Translator Bracket -Port	1
TA 4	Translator Pillow Block	2
TA 5	Translator Bracket Babbitt Bearing	2
TA 6	Pillow Block Cotter Pin	2
TA 7	Cutoff Valve Lever- Port	1
TA 9	Cutoff Lever - Bearing Insert	2
TA 10	Upper Main Valve Lever P & S	1
TA 15	Valve Rod Journal	2
TA 11	Lower Main Valve Lever- Port	1
TA 13	Translator Shaft Key- Small	1
TA 14-	Translator Shaft Key- Large	1
TA 16	Valve Rod Journal Washer	2
TA 17	Valve Rod Journal Key	2
TA 18	Translator Pillow Block Gib Bearing	2
S 13	Stud 1-1/4" x 12"	4
S 8	Stud 7/8" x 4-7/8"	4
L 1	Square Locking Screw 3/8' x 1-1/4"	2
L 4	Square Locking Screw 3/4" x 2-1/4"	2
N 3	3/4" Hex Nut	2
N 10	1-1/4" Hex Nut-Special	2
N 11	1-1/4" Hex Nut-Common 2-1/4" Flats	4
N 4	7/8" Hex Nut	4
N 20	7/8" Hex Nut -Locking	4
O 3	Oil Cup- Medium	2

**FASTENER #**  
1  
**QUANTITY**

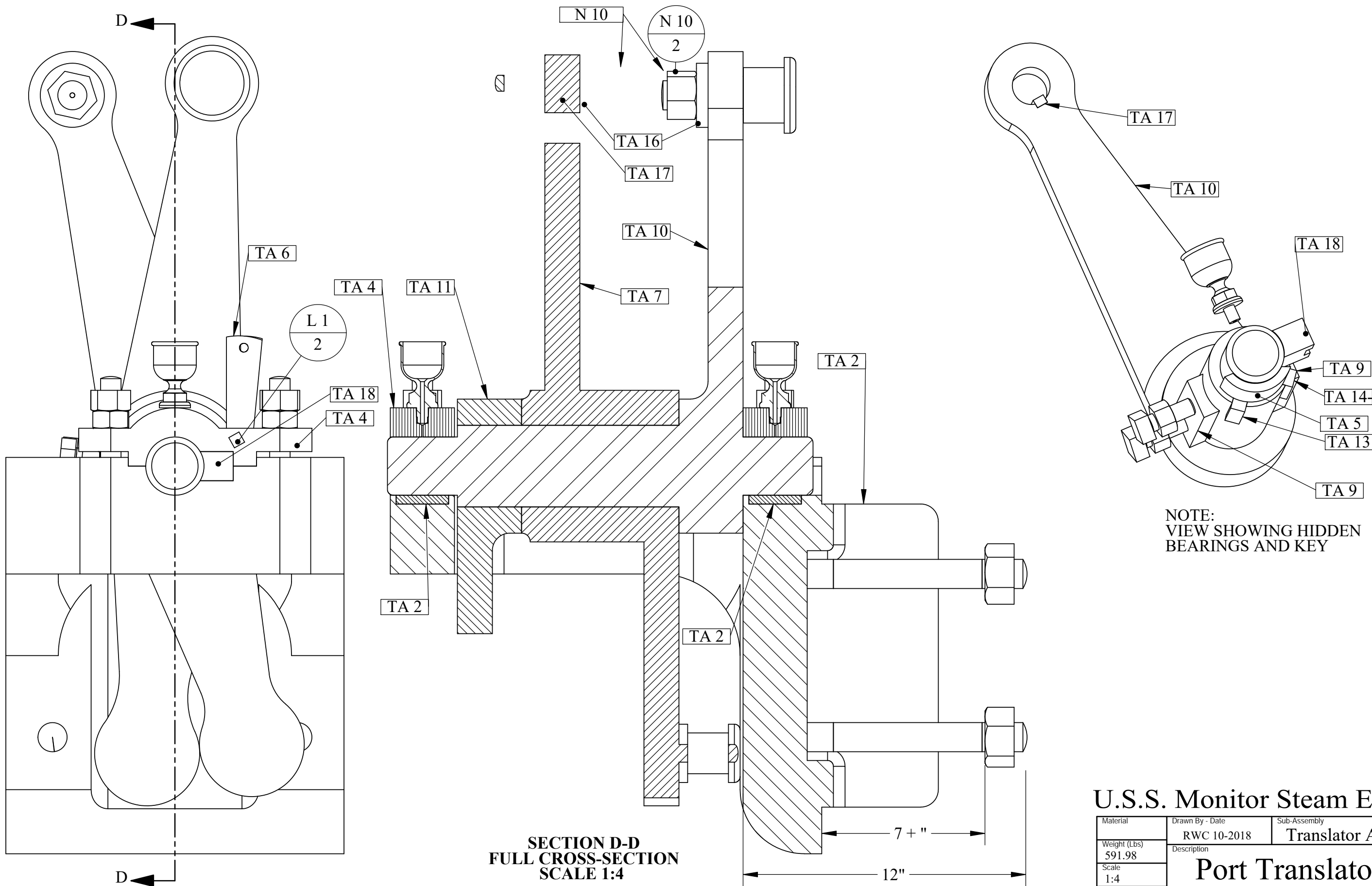
**PART #**

**U.S.S. Monitor Steam Engine**

Material	Drawn By - Date	Sub-Assembly
Weight (Lbs)	RWC 12-2018	Translator Assembly
Scale		
1:6		
Part #		
TA 1-P		

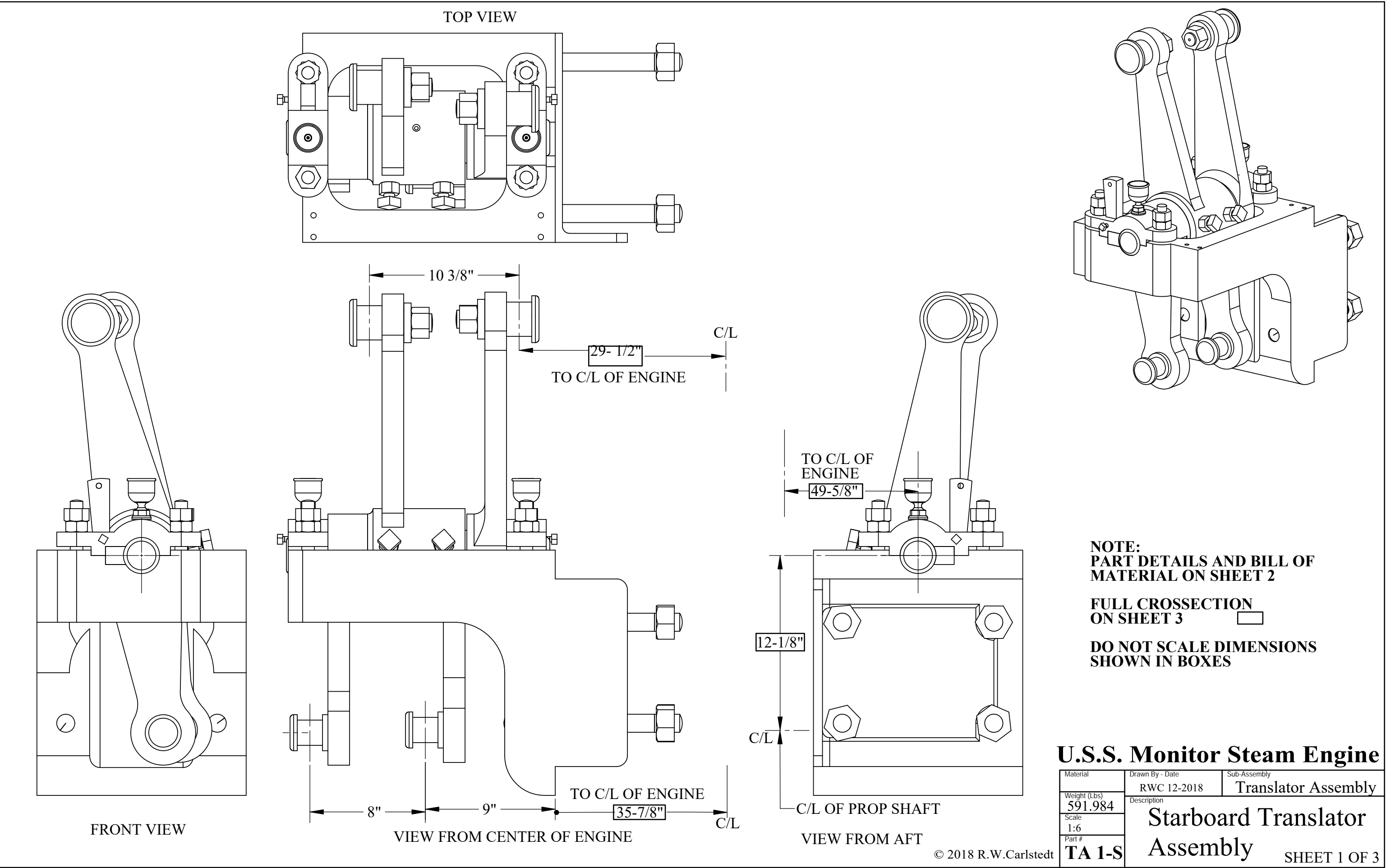
**Port Translator Assembly**

SHEET 2 OF 3

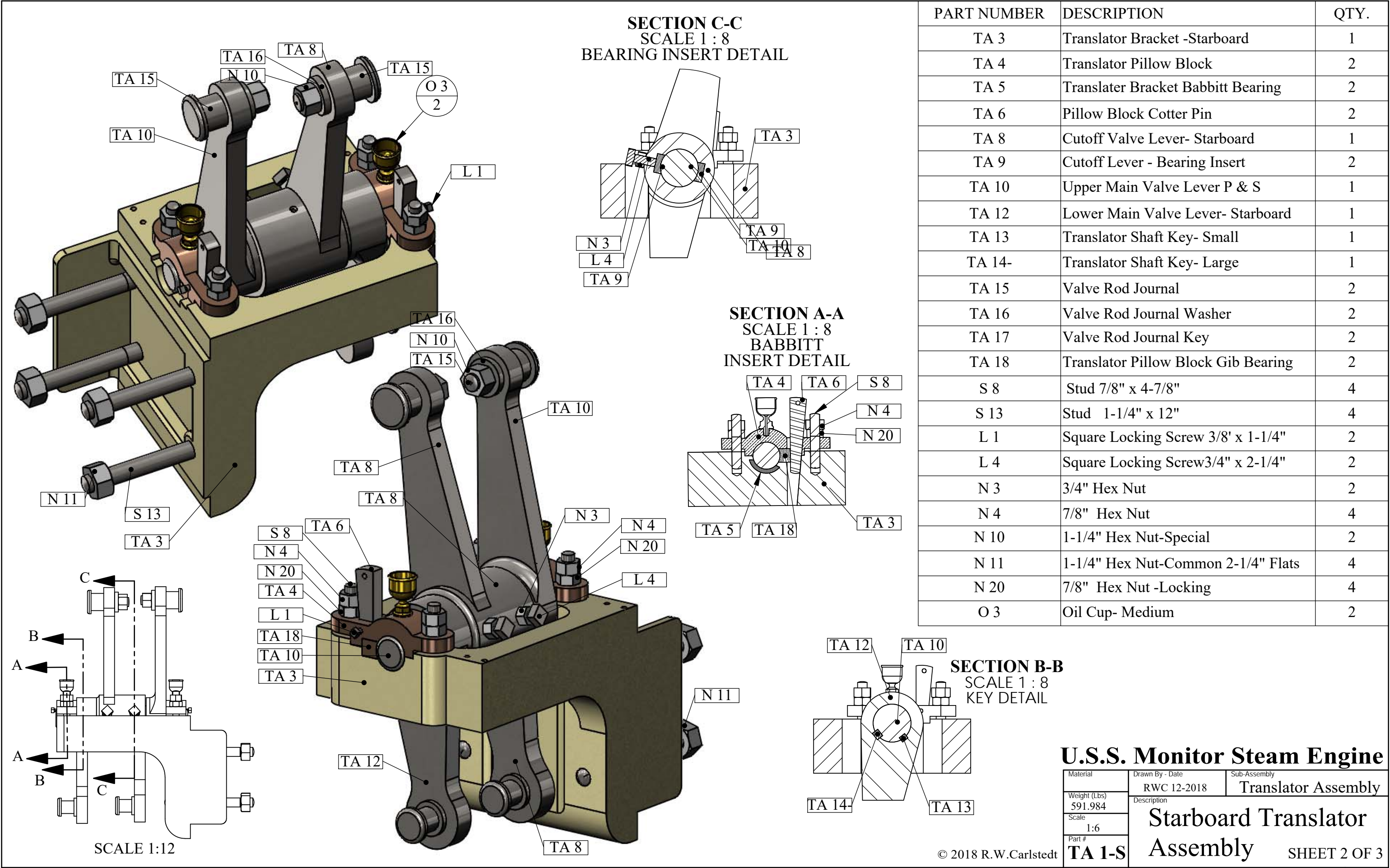


U.S.S. Monitor Steam Engine

Material	Drawn By - Date RWC 10-2018	Sub-Assembly Translator Assembly
Weight (Lbs) 591.98	Description <b>Port Translator Assembly</b>	
Scale 1:4		
Part # <b>TA 1-P</b>		





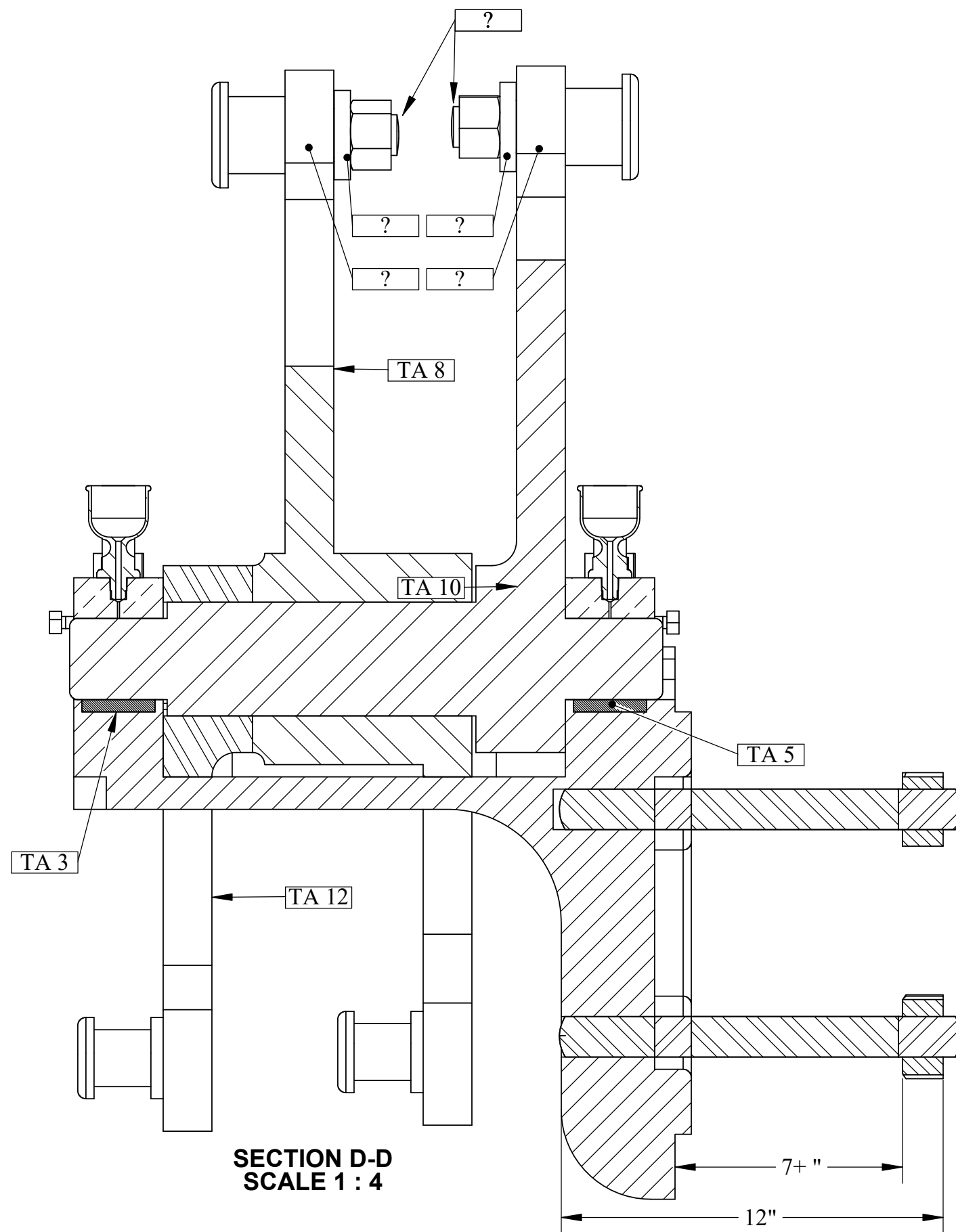
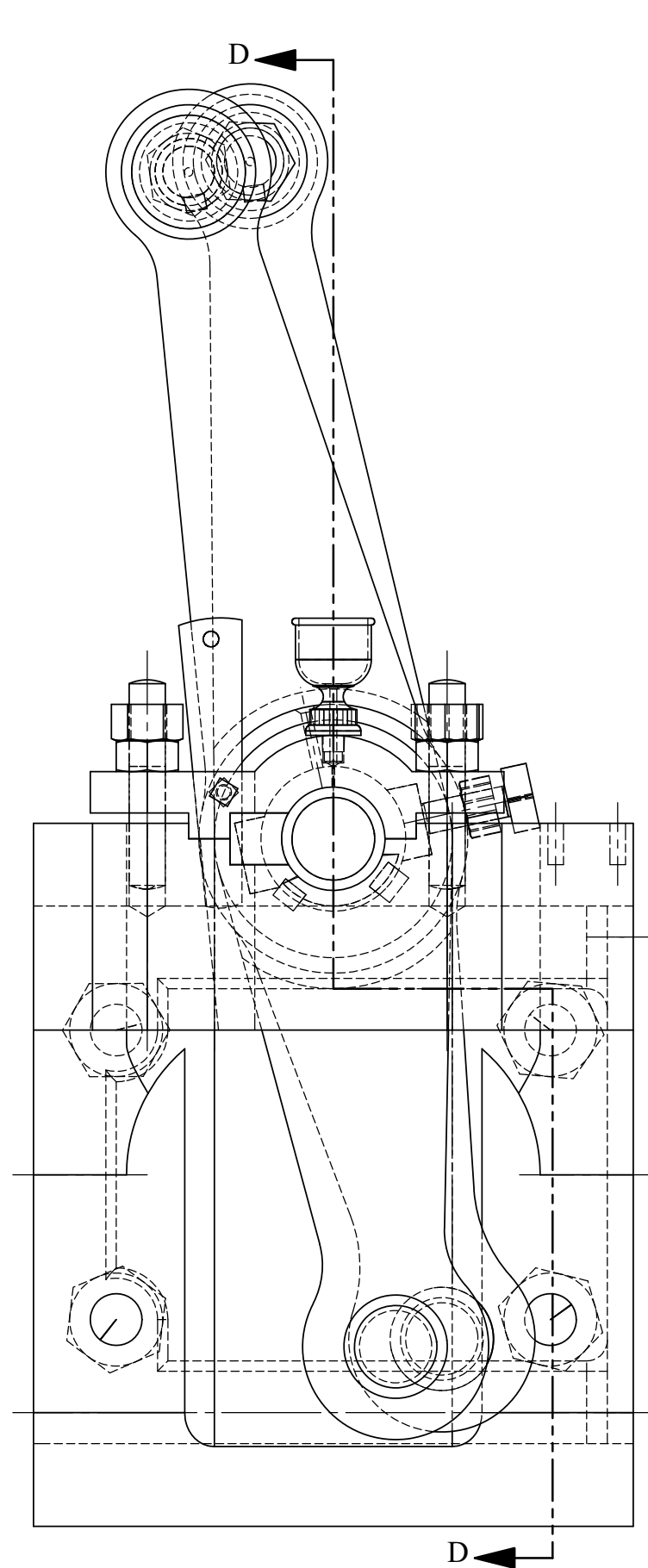


PART NUMBER	DESCRIPTION	QTY.
TA 3	Translator Bracket -Starboard	1
TA 4	Translator Pillow Block	2
TA 5	Translator Bracket Babbitt Bearing	2
TA 6	Pillow Block Cotter Pin	2
TA 8	Cutoff Valve Lever- Starboard	1
TA 9	Cutoff Lever - Bearing Insert	2
TA 10	Upper Main Valve Lever P & S	1
TA 12	Lower Main Valve Lever- Starboard	1
TA 13	Translator Shaft Key- Small	1
TA 14-	Translator Shaft Key- Large	1
TA 15	Valve Rod Journal	2
TA 16	Valve Rod Journal Washer	2
TA 17	Valve Rod Journal Key	2
TA 18	Translator Pillow Block Gib Bearing	2
S 8	Stud 7/8" x 4-7/8"	4
S 13	Stud 1-1/4" x 12"	4
L 1	Square Locking Screw 3/8' x 1-1/4"	2
L 4	Square Locking Screw 3/4" x 2-1/4"	2
N 3	3/4" Hex Nut	2
N 4	7/8" Hex Nut	4
N 10	1-1/4" Hex Nut-Special	2
N 11	1-1/4" Hex Nut-Common 2-1/4" Flats	4
N 20	7/8" Hex Nut -Locking	4
O 3	Oil Cup- Medium	2

U.S.S. Monitor Steam Engine

Material	Drawn By - Date	Sub-Assembly
Weight (Lbs)	RWC 12-2018	Translator Assembly
Scale	Description	
1:6	Starboard Translator Assembly	
Part #	TA 1-S	

SHEET 2 OF 3

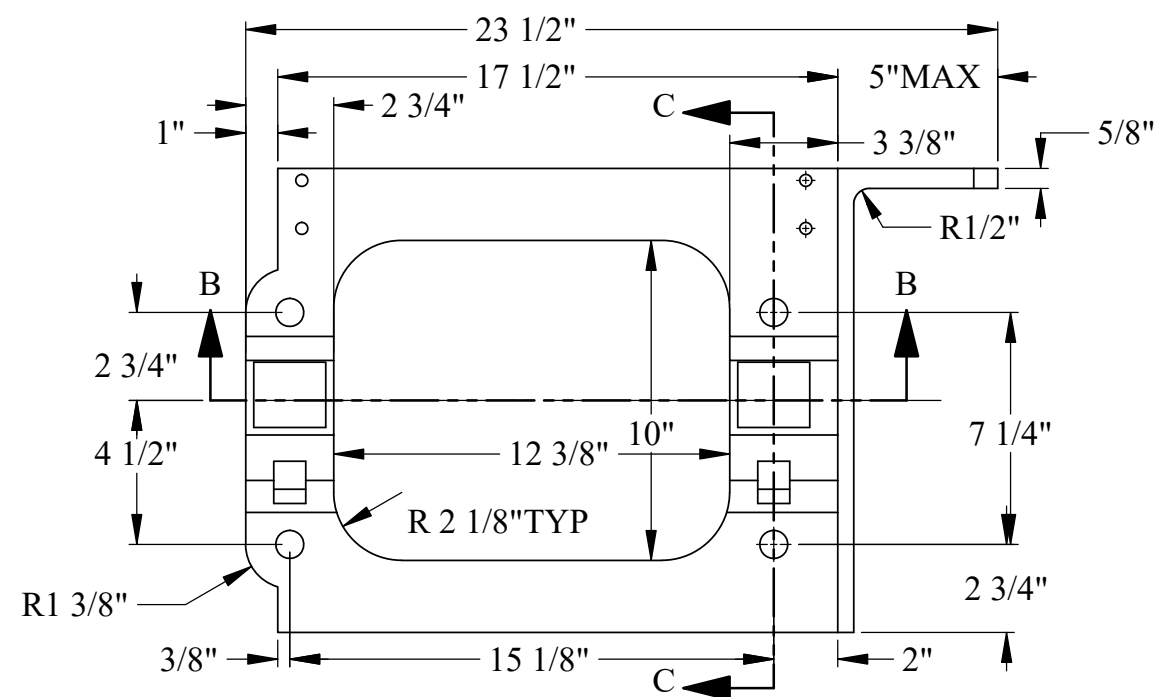


SECTION D-D  
SCALE 1 : 4

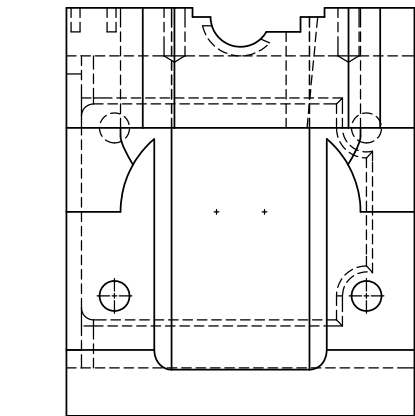
© 2018 R.W.Carlstedt

# U.S.S. Monitor Steam Engine

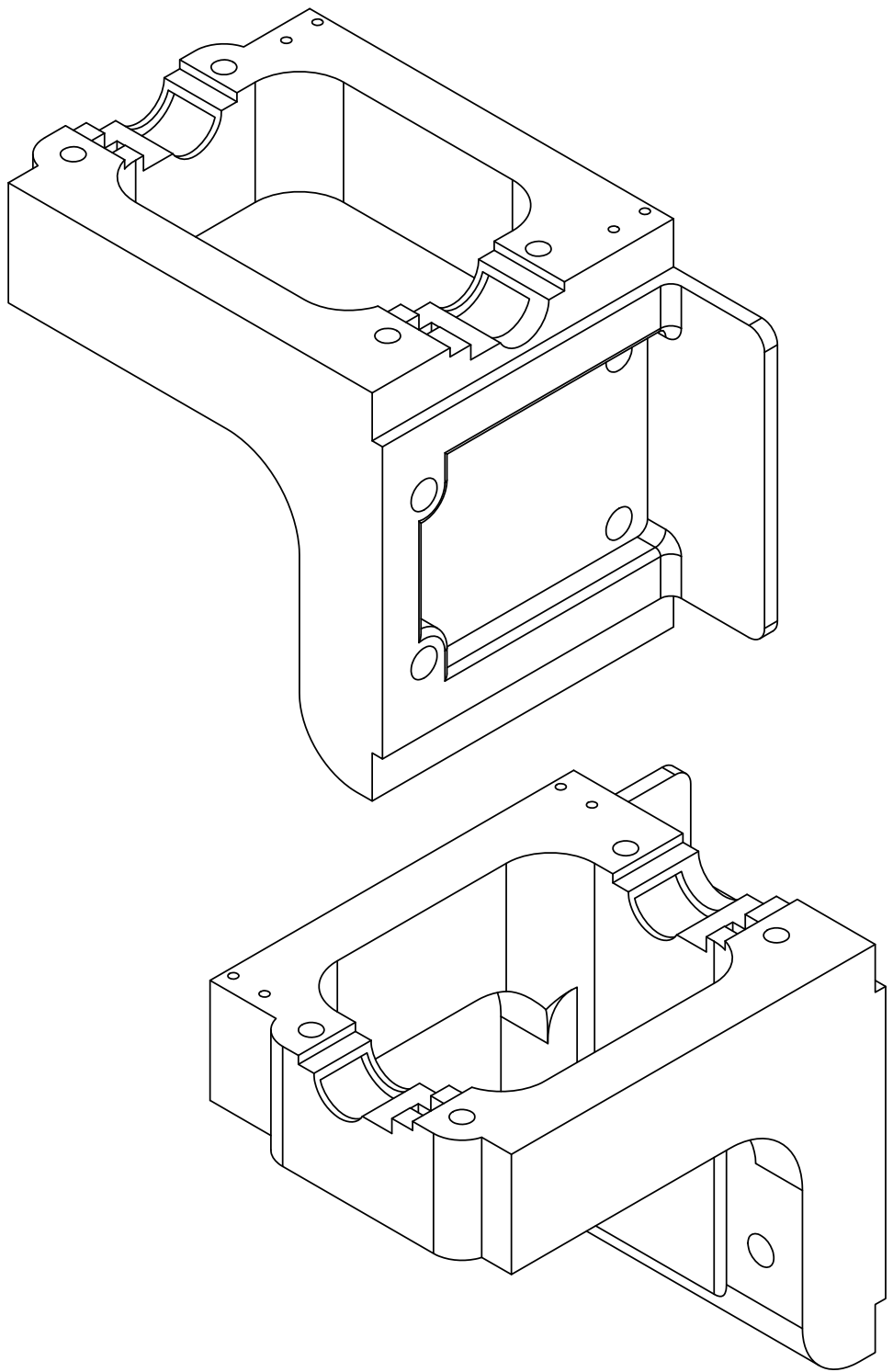
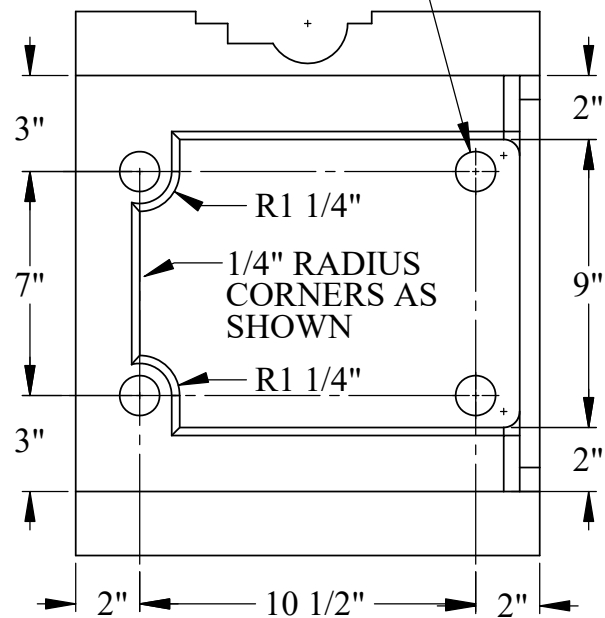
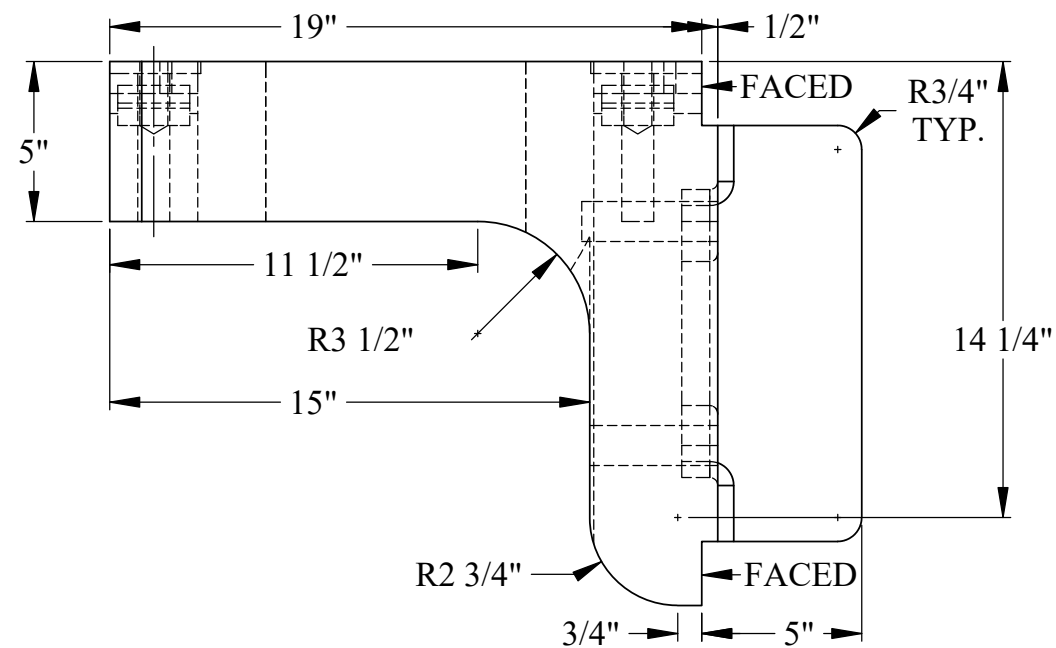
Material	Drawn By - Date	Sub-Assembly
Weight (Lbs)	RWC 12-2018	Translator Assembly
591.984	Description	
Scale		
1:12		
Part #	Starboard Translator Assembly	
TA 1-S		



VIEW SECTIONS A-A & B-B ON SHEET 2 OF 2



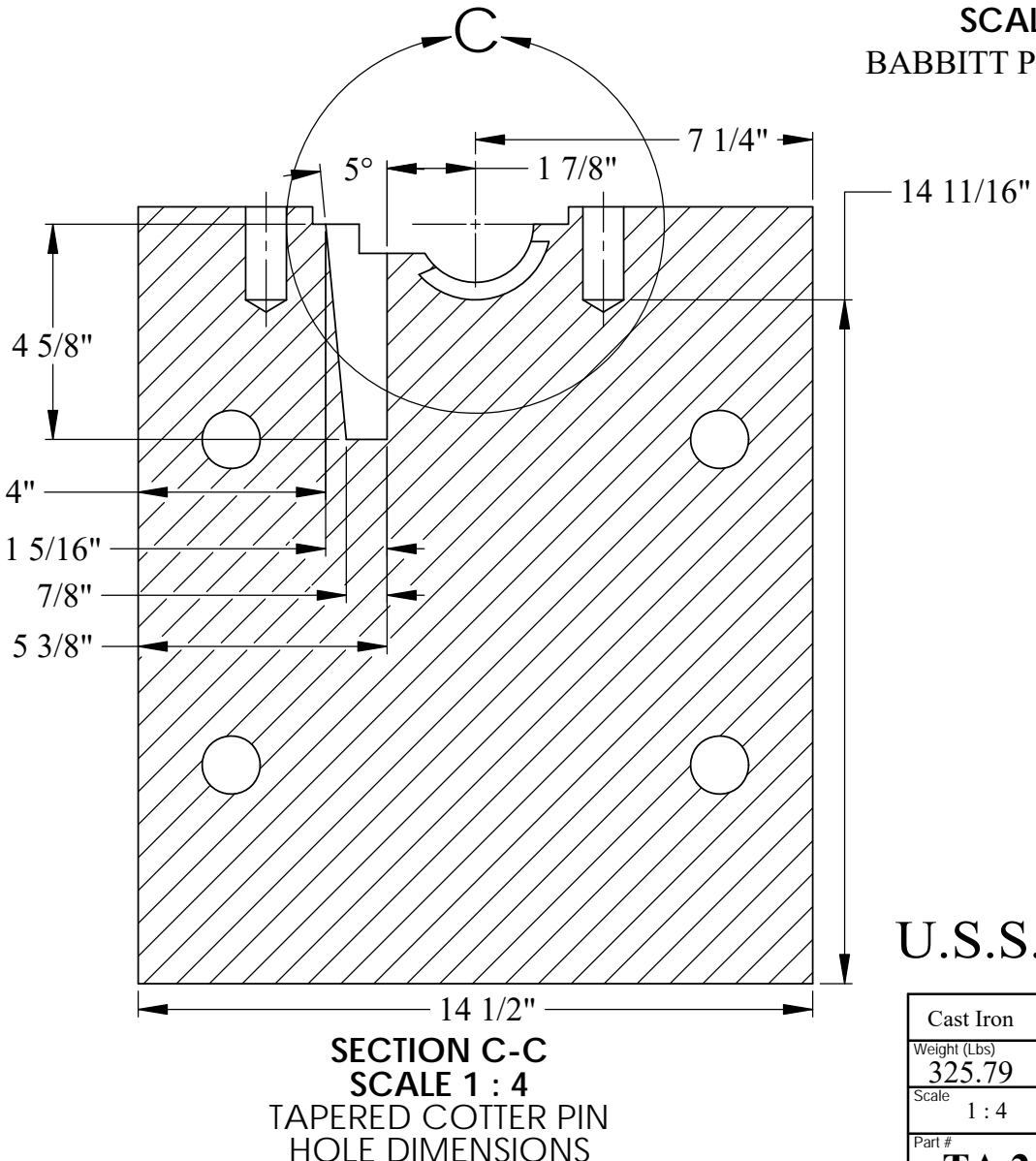
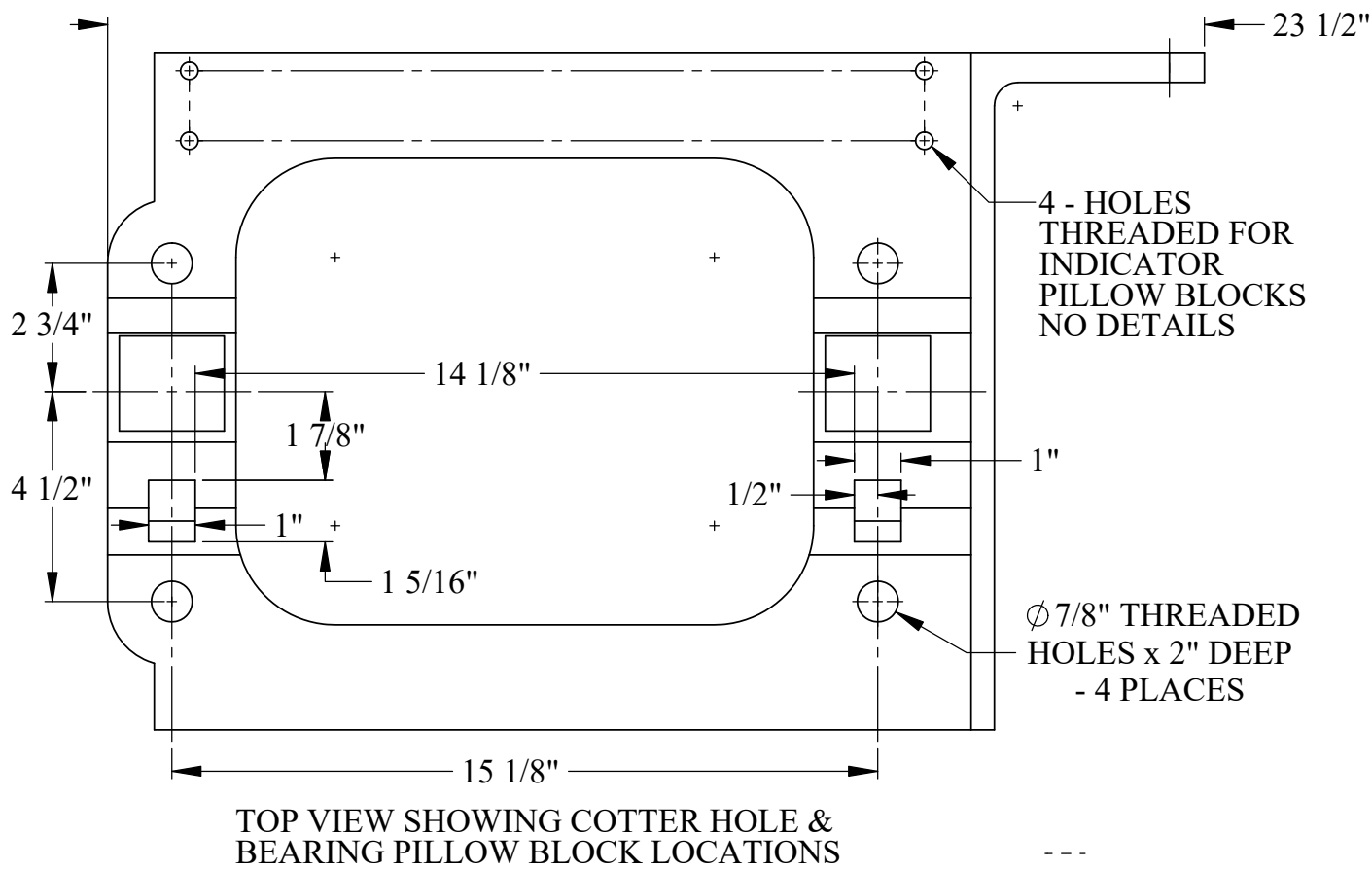
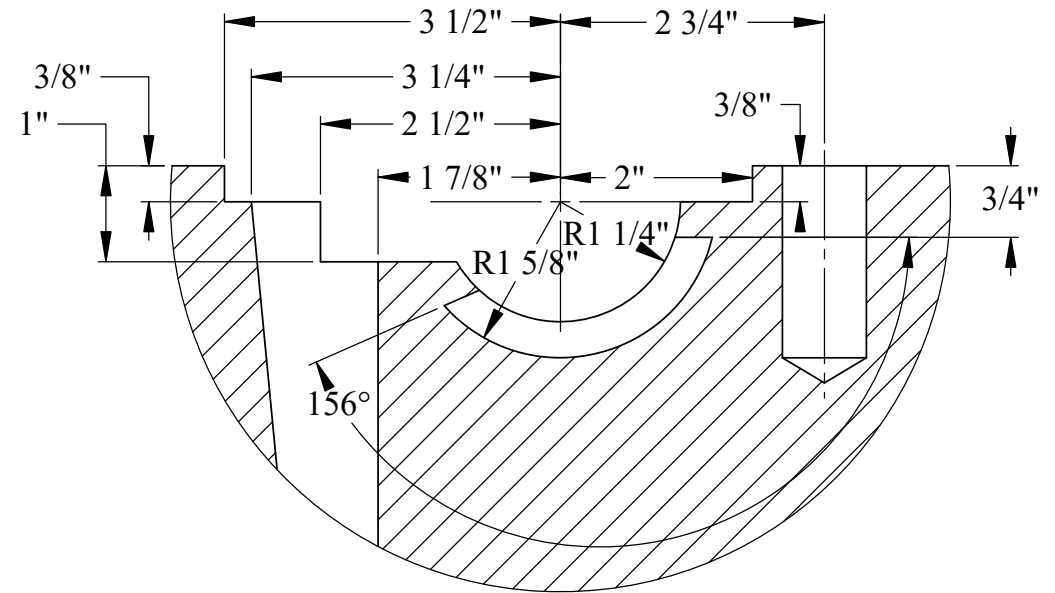
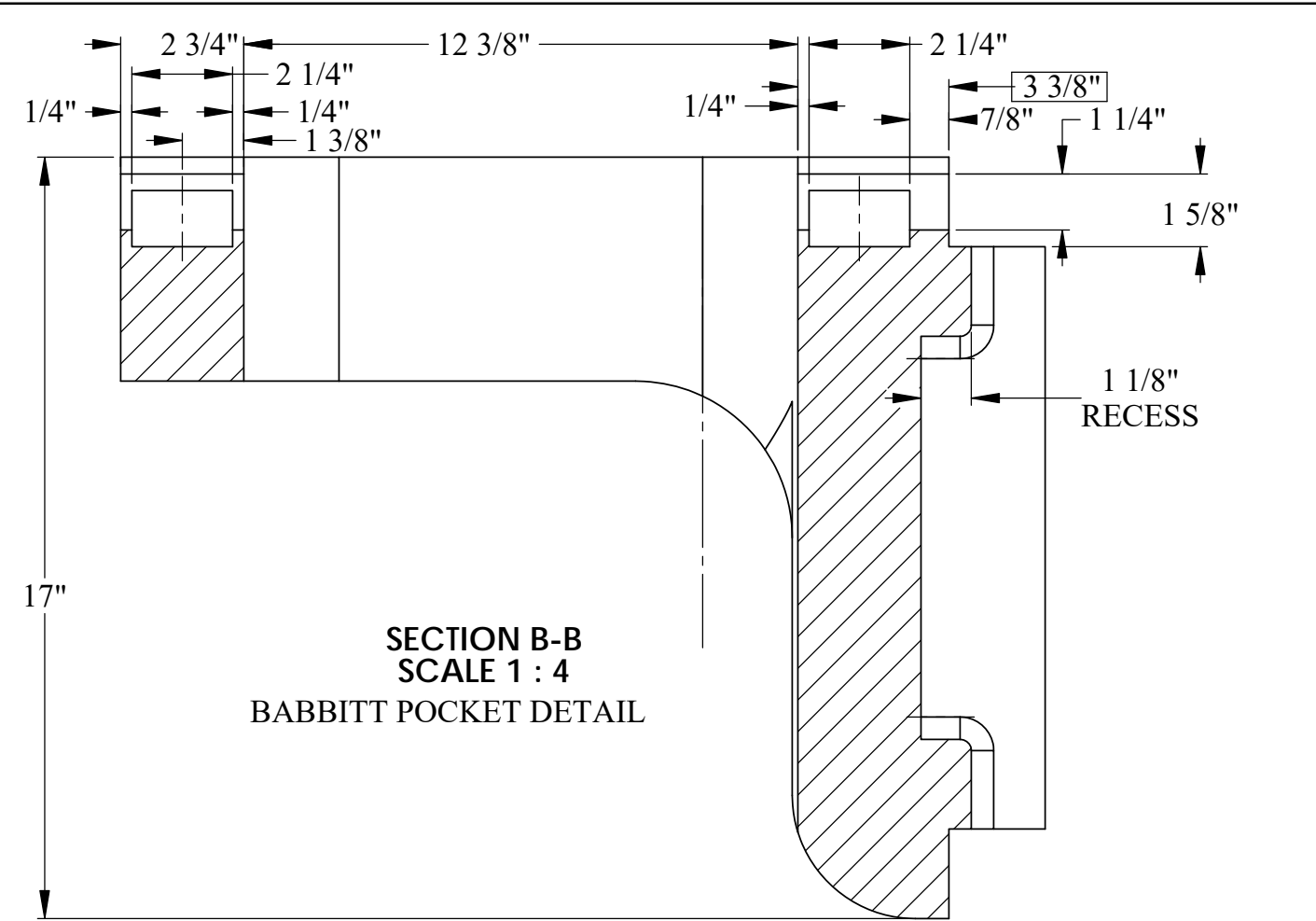
Ø 1 1/4" x 4" DEEP  
THREADED HOLES  
AS SHOWN



U.S.S. Monitor Steam Engine

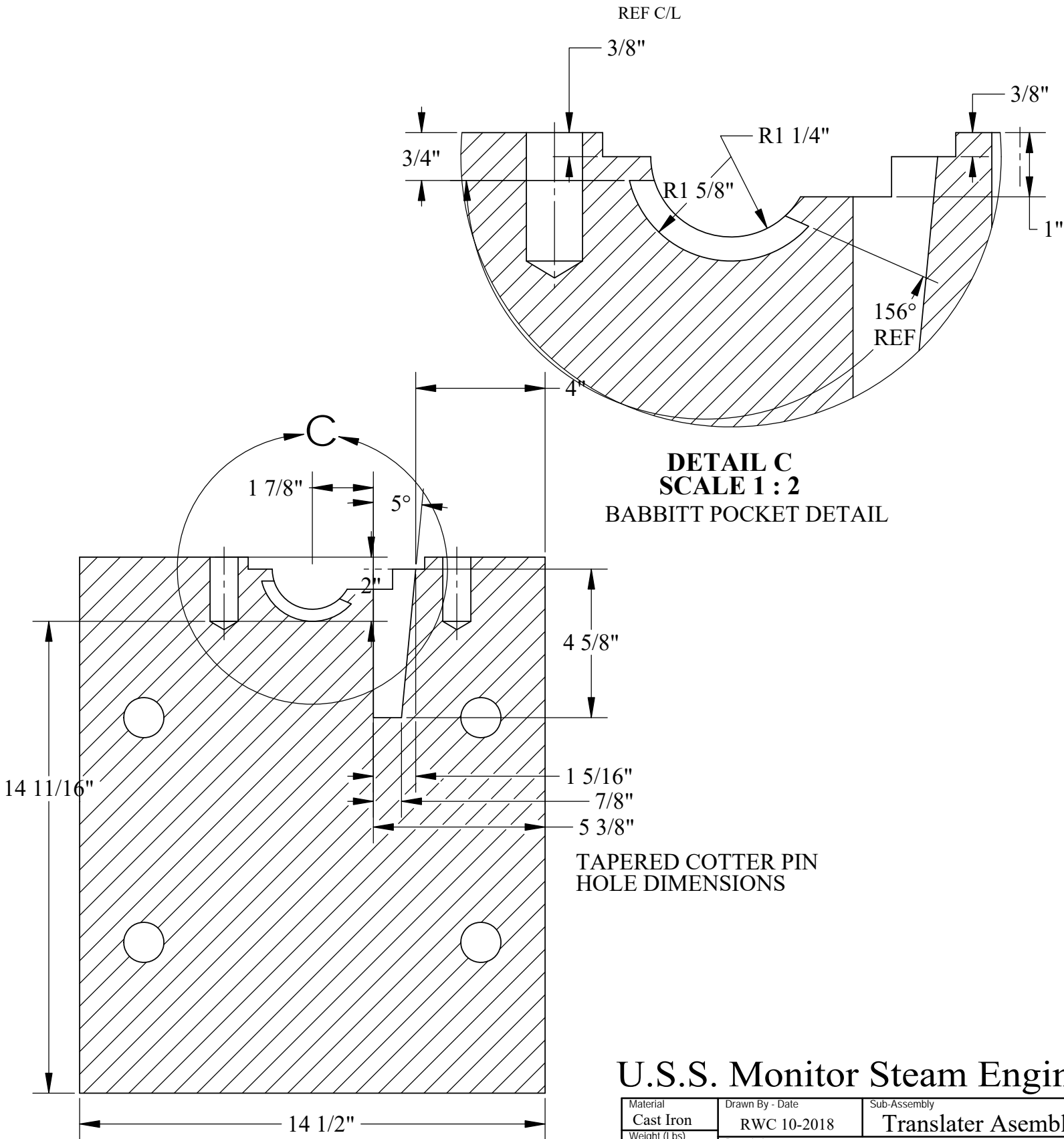
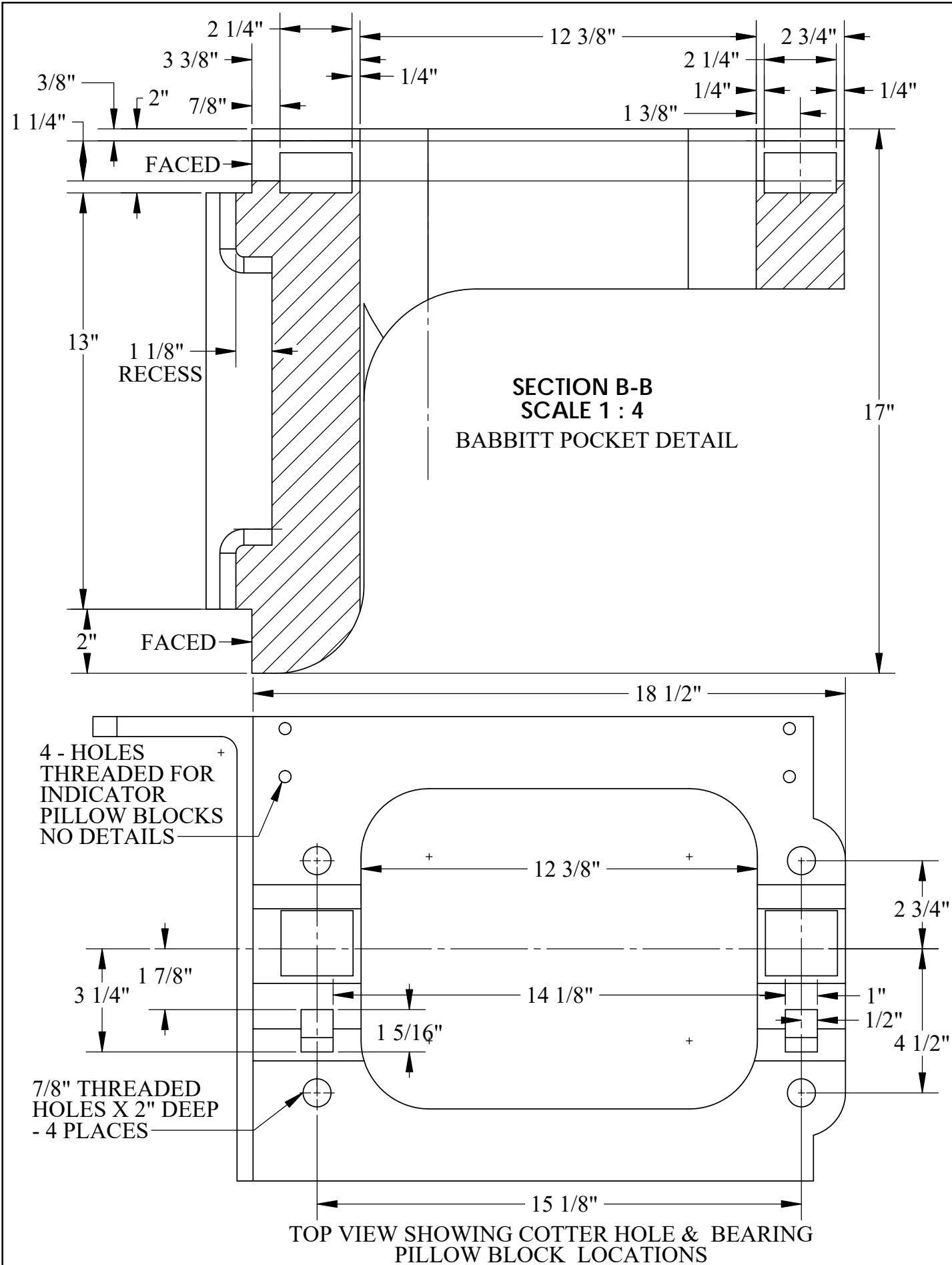
Material Cast Iron	Drawn By - Date RWC 10-2018	Sub-Assembly Translator Assembly
Weight (Lbs) 325.79	Translator Bracket - Port	
Scale 1:6		
Part # TA 2		





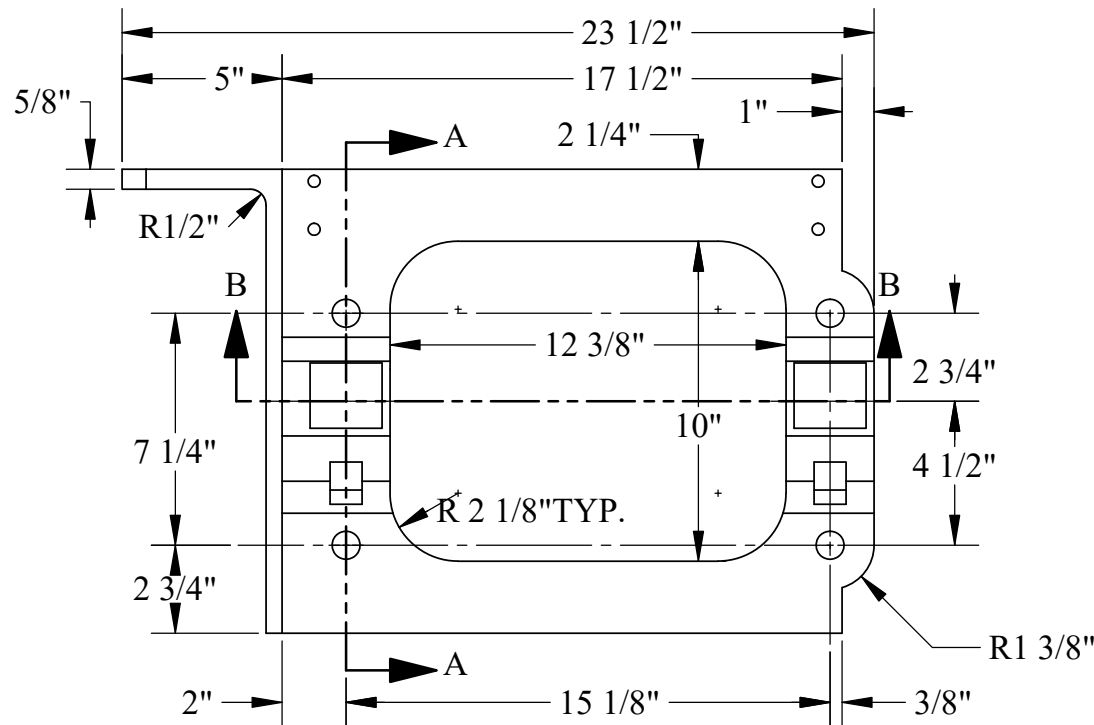
U.S.S. Monitor Steam Engine

Cast Iron	Drawn By - Date RWC 10-2018	Sub-Assembly Translator Assembly
Weight (Lbs) 325.79	Description Translator Bracket - Port	
Scale 1 : 4		
Part # TA 2	Sheet 2 of 2	



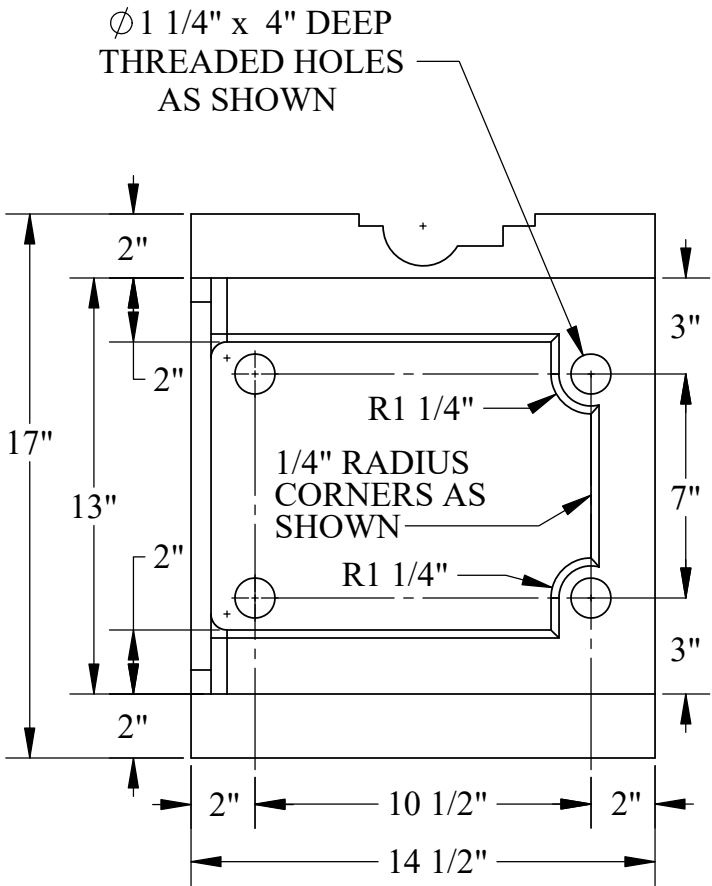
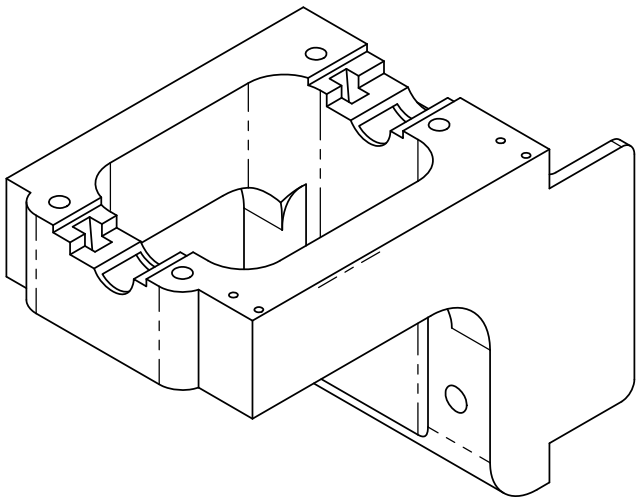
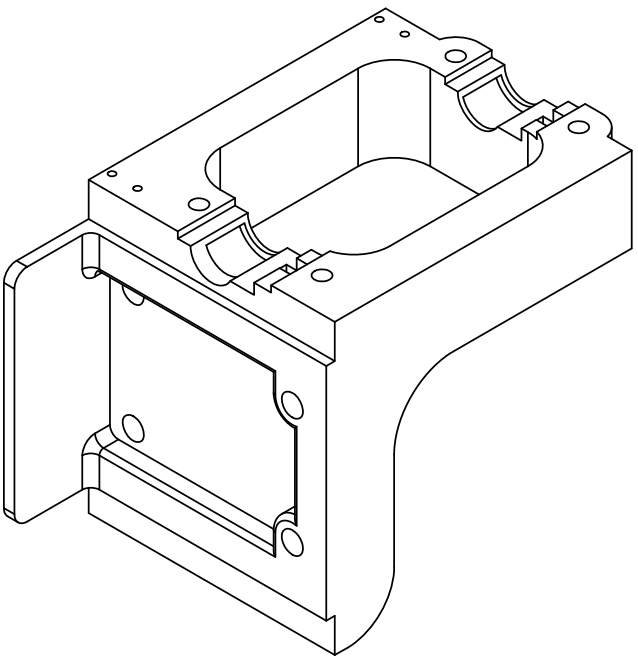
U.S.S. Monitor Steam Engine

Material Cast Iron	Drawn By - Date RWC 10-2018	Sub-Assembly Translator Assembly
Weight (Lbs) 325.788	Translator Bracket - Starboard	
Scale 1 : 4		
Part # TA 3		

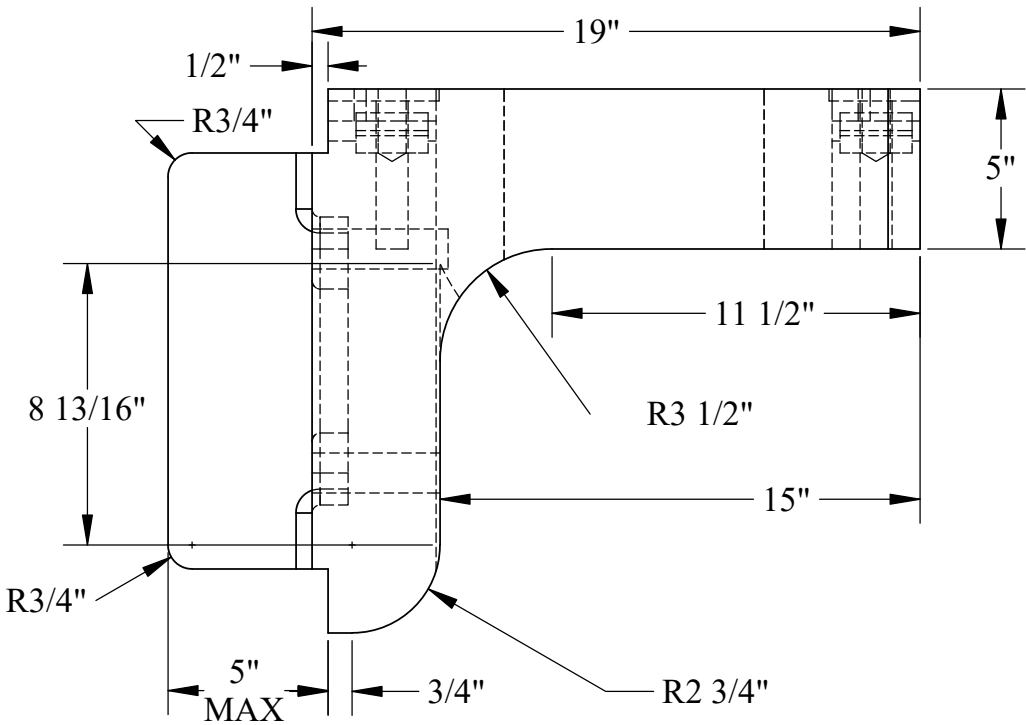


VIEW SECTIONS A-A & B-B ON SHEET 2 OF 2

DETAIL ON  
SHEET 2

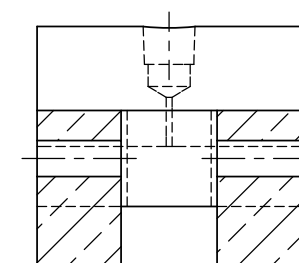
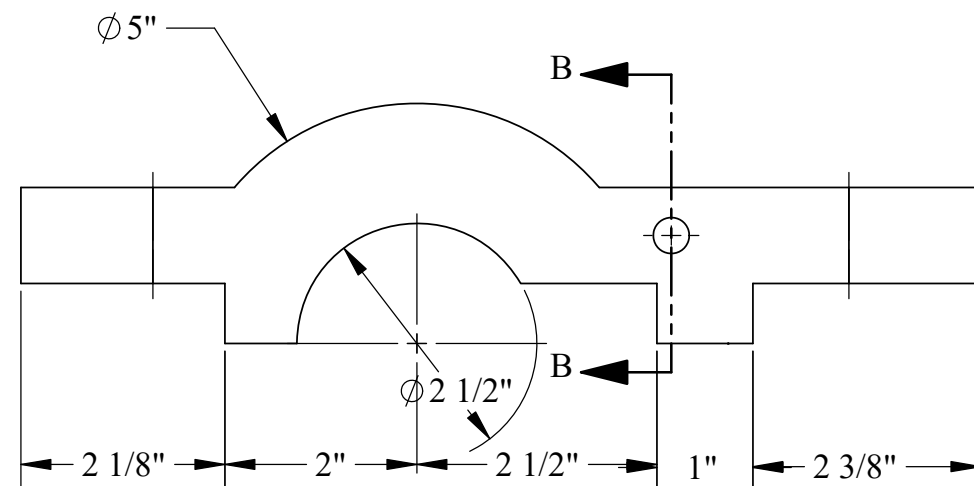
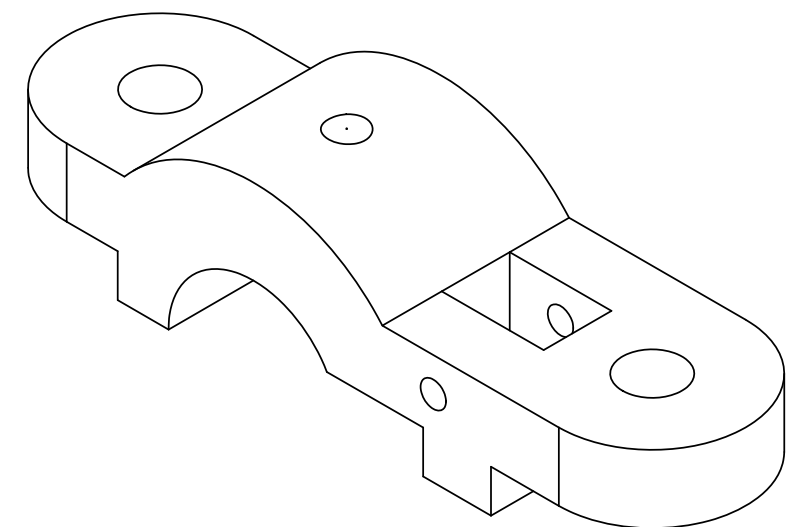
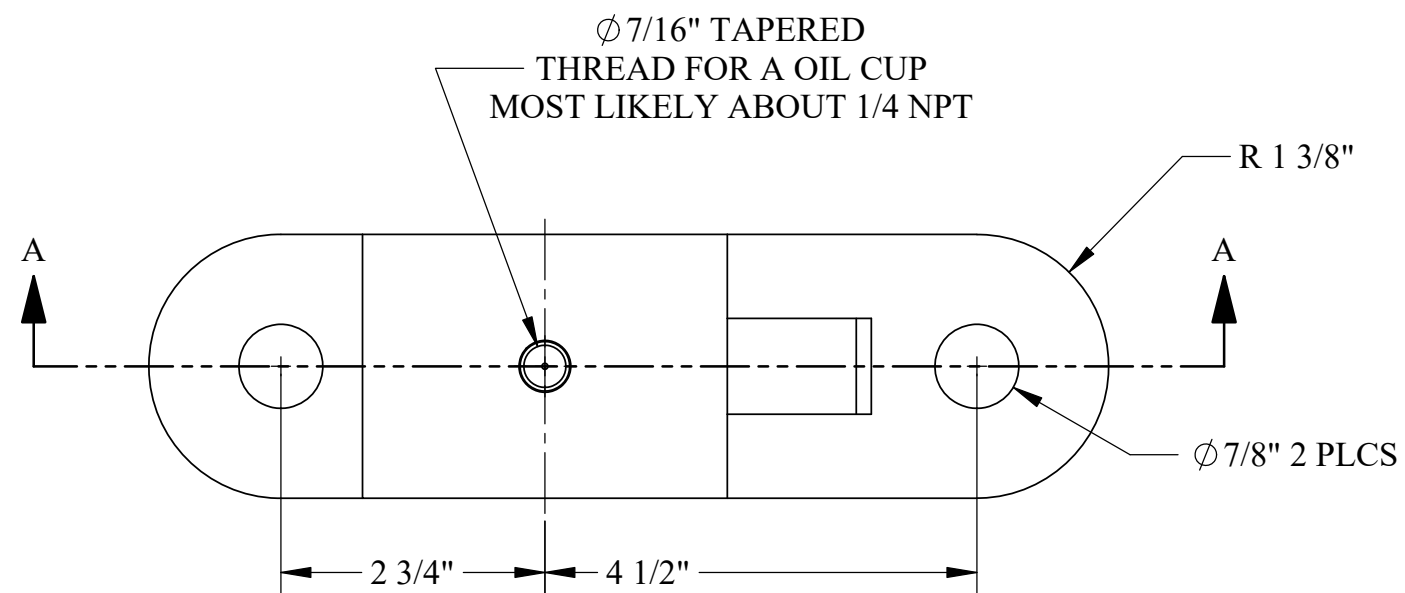


AFT VIEW

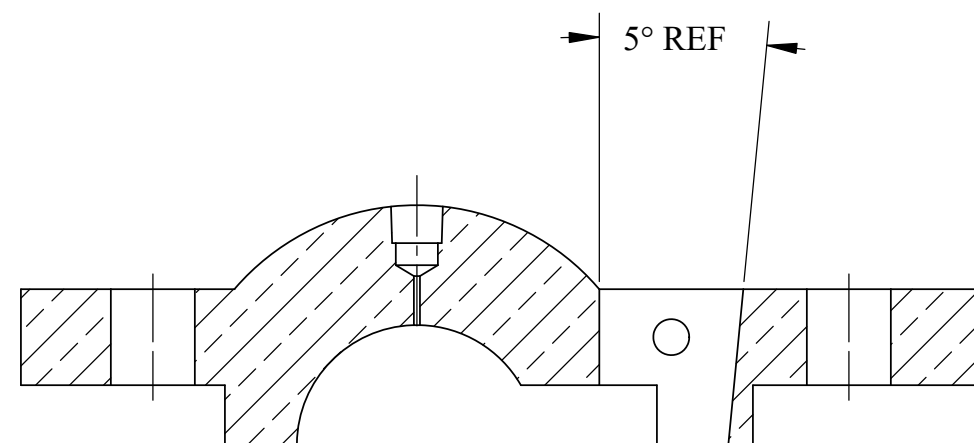


U.S.S. Monitor Steam Engine

Material Cast Iron	Drawn By - Date RWC 10-2018	Sub-Assembly Translator Assembly
Weight (Lbs) 325.788	Translator Bracket - Starboard	
Scale 1:6		
Part # TA 3		



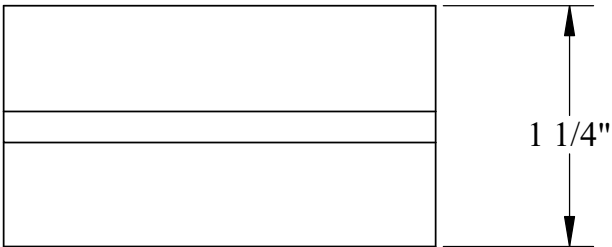
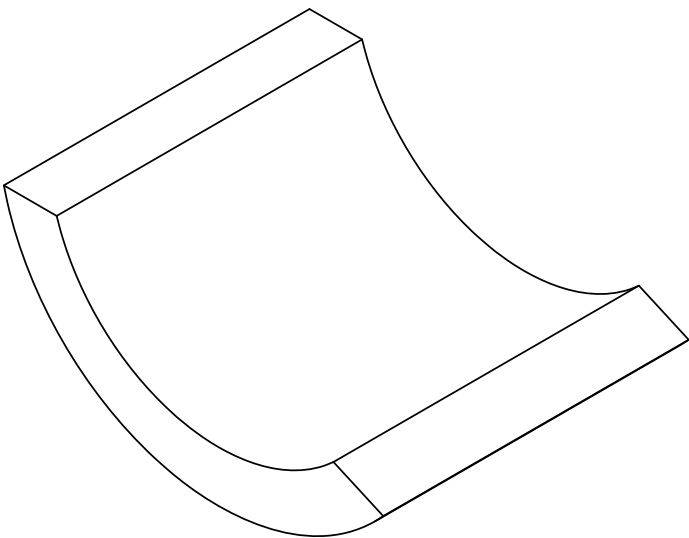
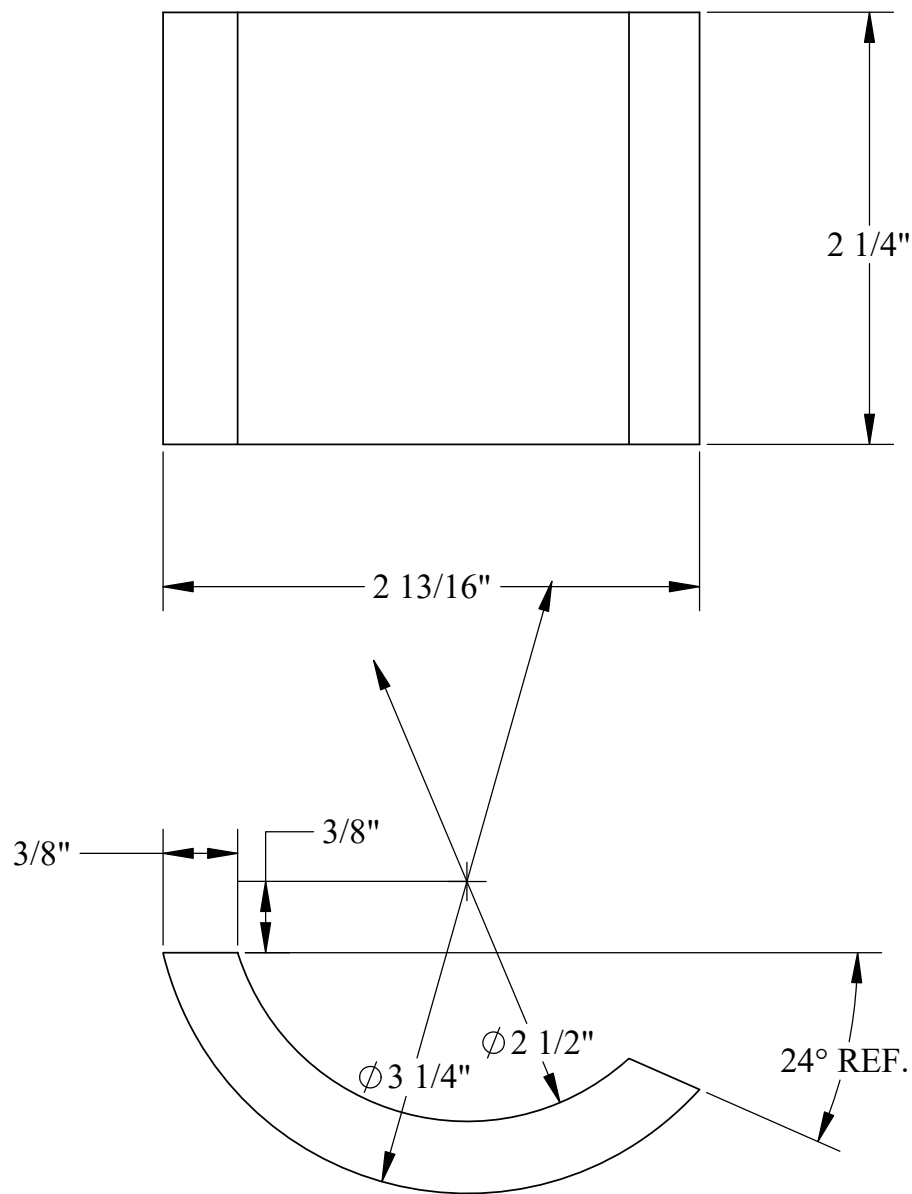
SECTION B-B



SECTION A-A

## U.S.S. Monitor Steam Engine

Material <b>Bronze</b>	Drawn By - Date RWC 10-2018	Sub-Assembly Translator Asembly
Weight (Lbs) <b>8.76</b>	<b>Translator Pillow Block</b>	
Scale 1:2		
Part # <b>TA 4</b>		

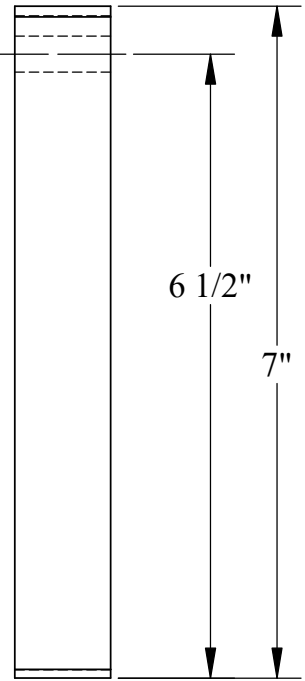
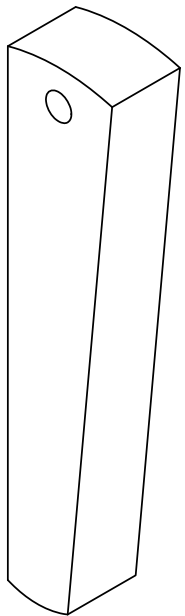
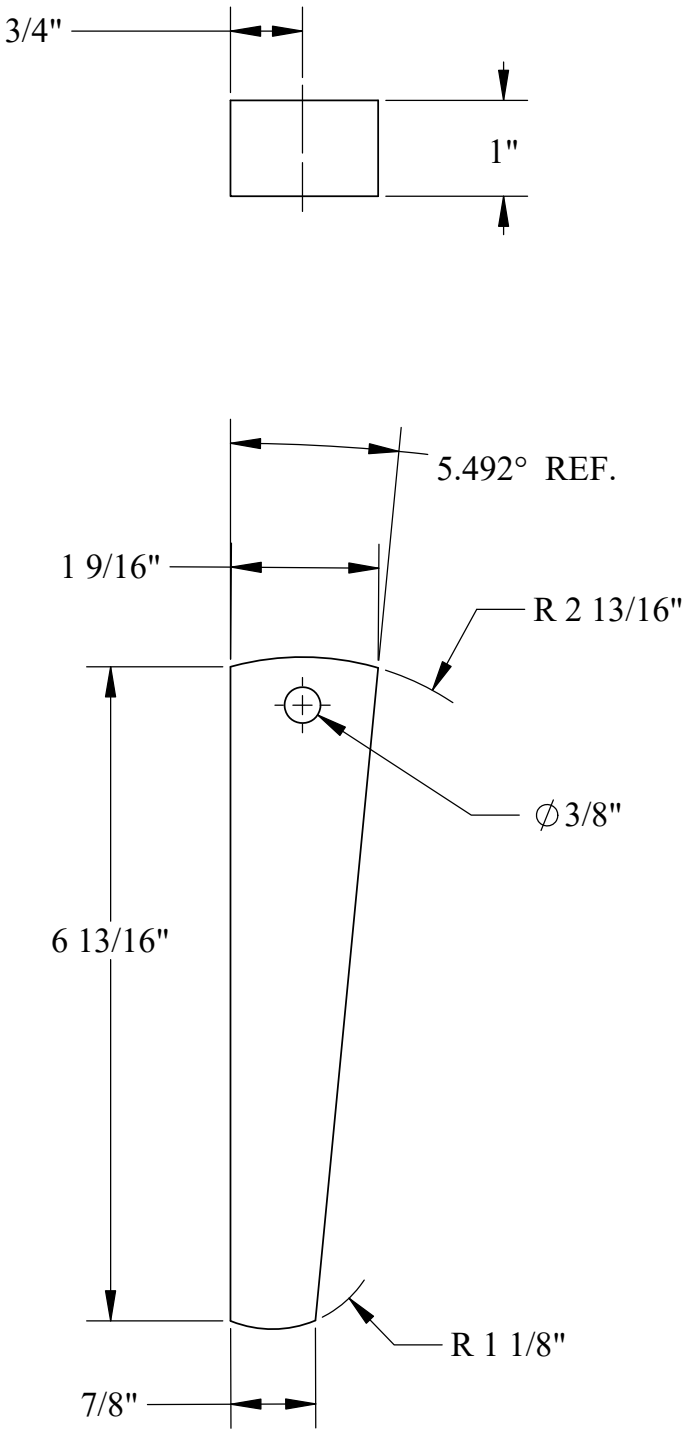


NOTE:  
THIS PART IS FORMED BY CASTING THE BABBITT  
INTO THE CAVITY FORMED BETWEEN THE  
TRANSLATER BRACKETS ( TA 2- TA 3 ) AND LEVER  
SHAFTS (TA 11-TA 12)  
-ONCE POURED, IT MAY BE REMOVED AND  
REPLACED  
AS NEEDED

U.S.S. Monitor Steam Engine

Material Babbitt	Drawn By - Date RWC 10-2018	Sub-Assembly Translator Asembly
Weight (Lbs) 0.68	Translator Bracket Babbitt Bearing	
Scale 1:1		
Part # TA 5		

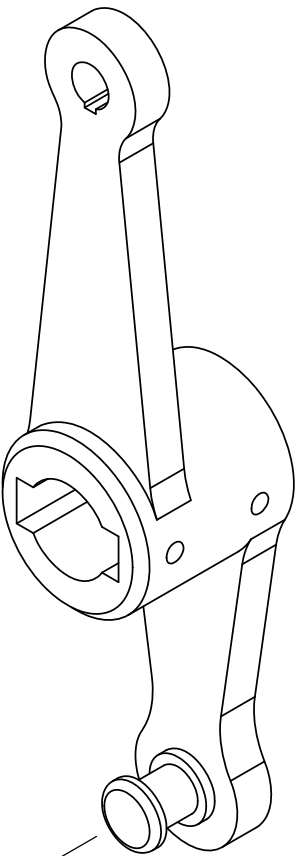
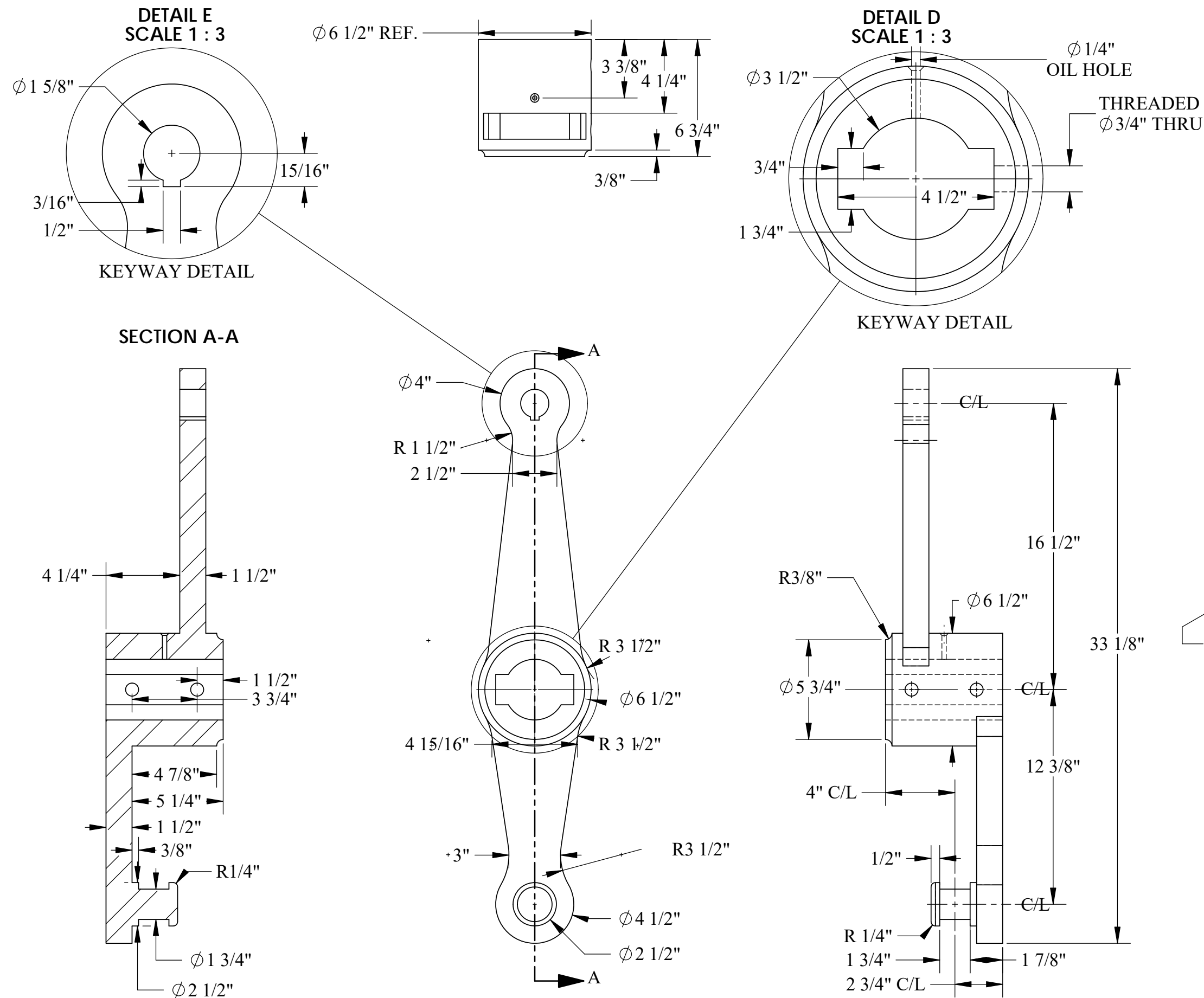




U.S.S. Monitor Steam Engine

Material STEEL	Drawn By - Date RWC 10-2018	Sub-Assembly Translator Asembly
Weight (Lbs) 2.37	Pillow Block Cotter Pin	
Scale 1:2		
Part # TA 6		

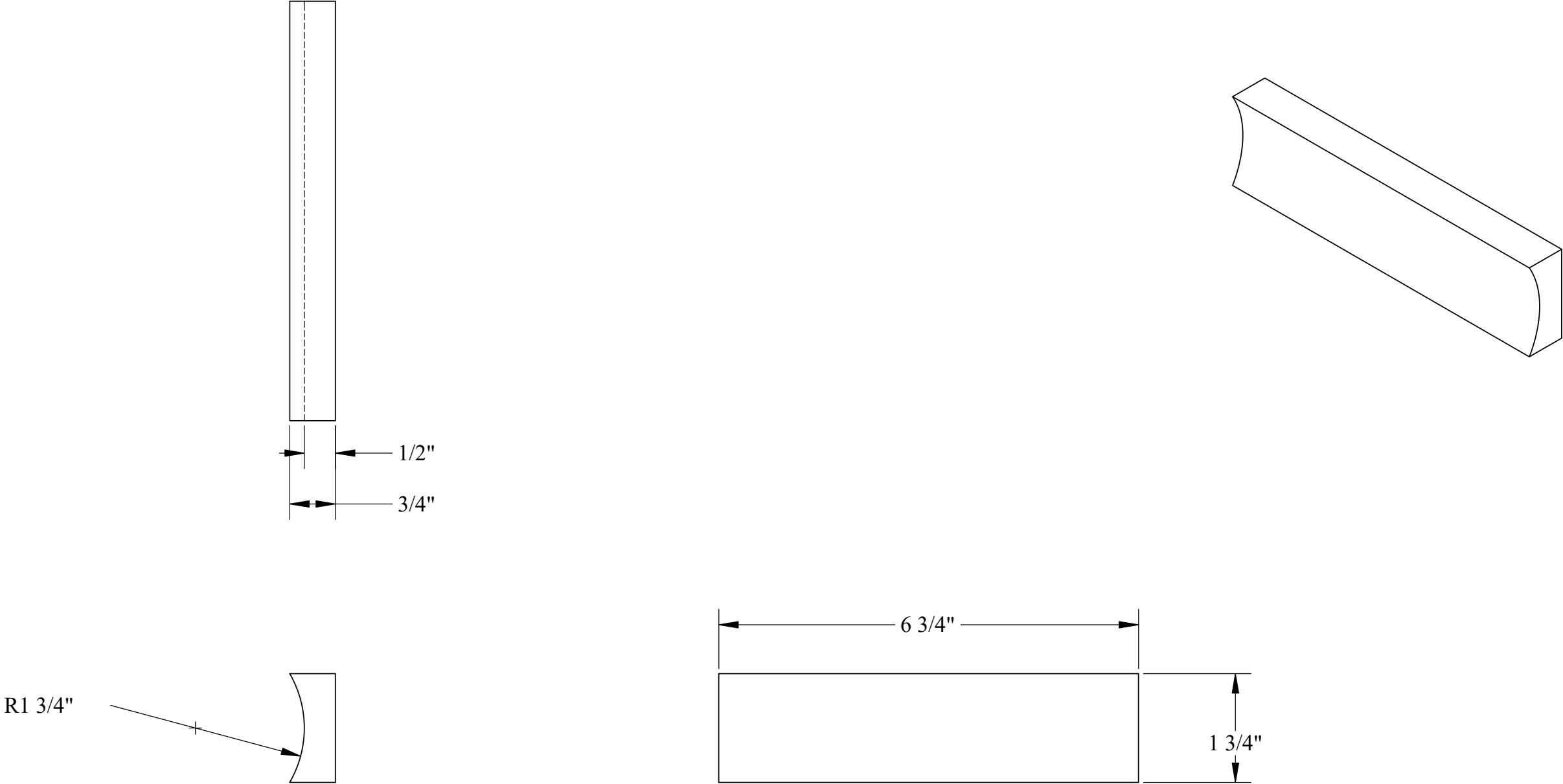




NOTE :  
THE JOURNAL PIN ON THE LOWER LEVER  
IS FORGED WELDED TO THE LEVER AT THE  
TIME OF FABRICATION.-  
LATER ENGINES USED A SEPARATE PART

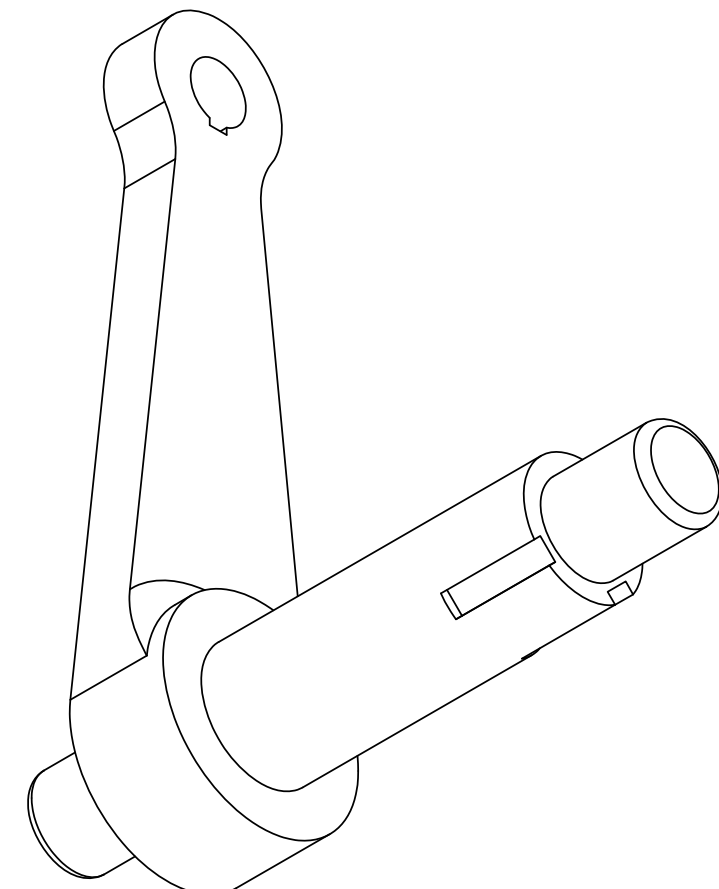
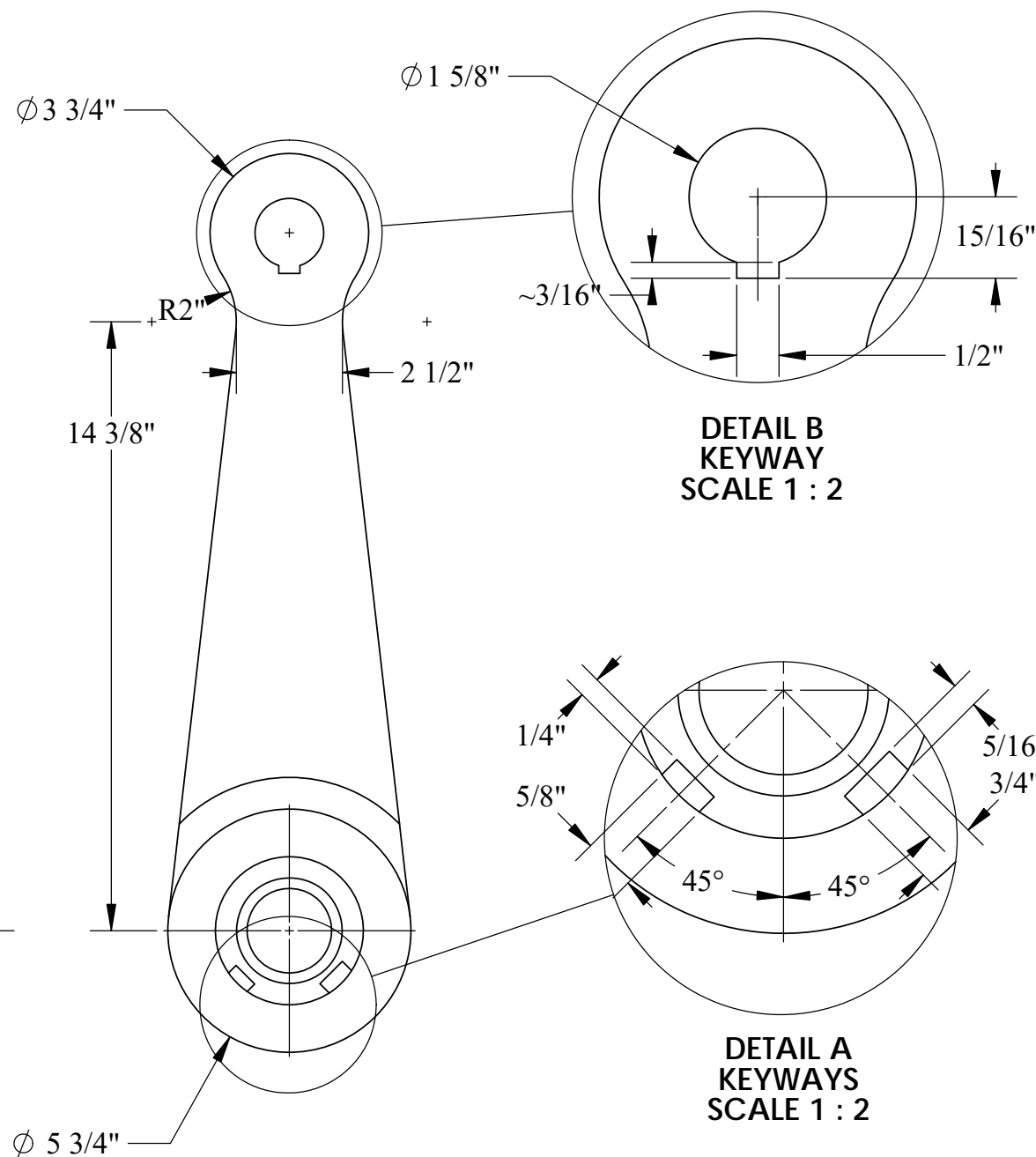
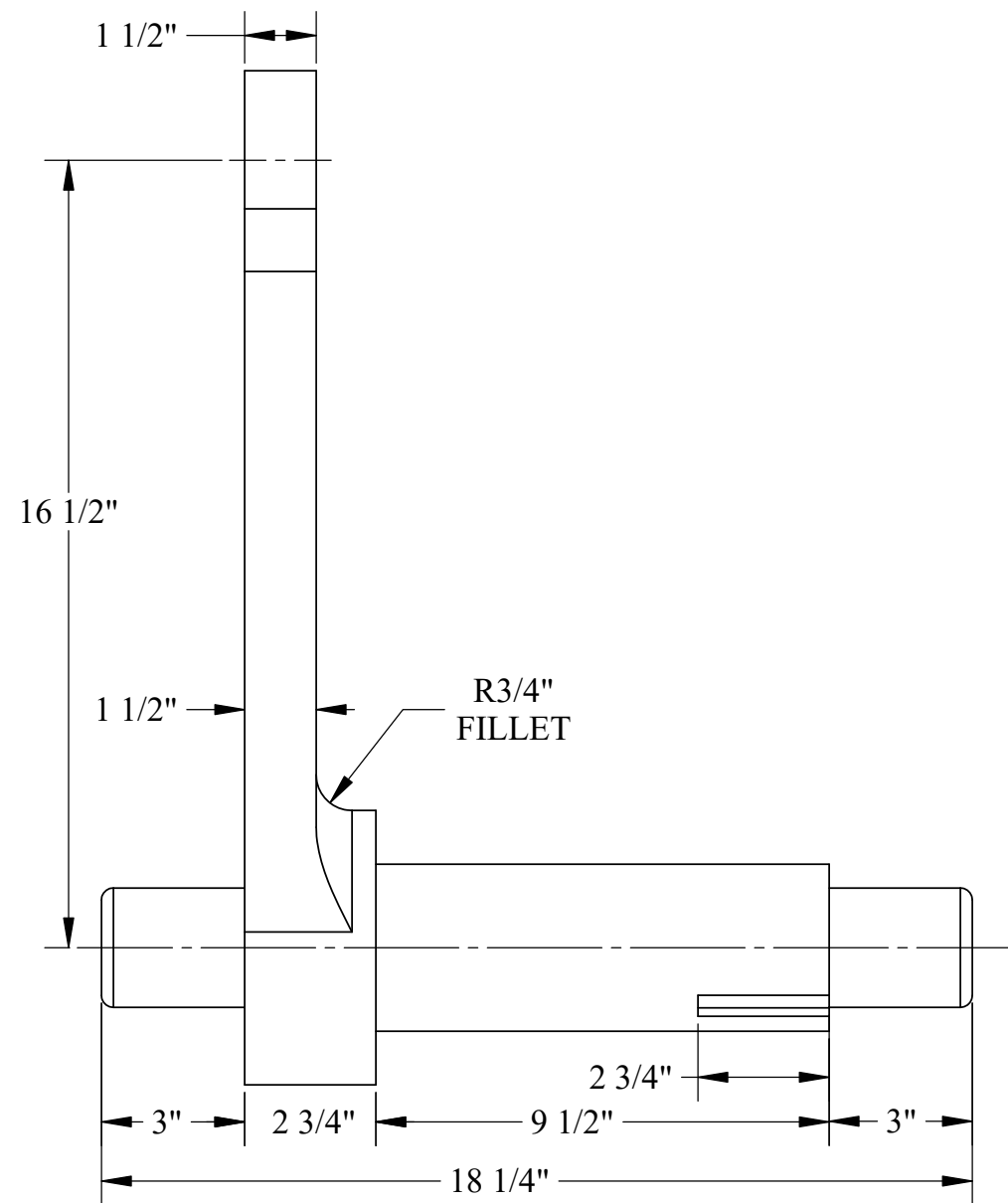
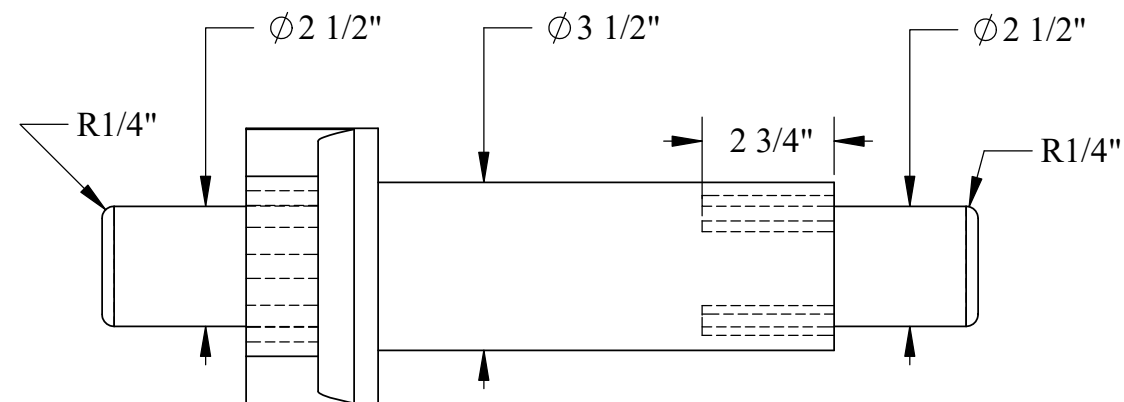
U.S.S. Monitor Steam Engine

Material STEEL	Drawn By - Date RWC 10-2018	Sub-Assembly Translator Assembly
Weight (Lbs) 85.915	Description <b>Cutoff Valve Lever- Starboard</b>	
Scale 1:6		
Part # <b>TA 8</b>		



U.S.S. Monitor Steam Engine

Material Bronze	Drawn By - Date RWC 10-2018	Sub-Assembly Translator Asembly
Weight (Lbs) 2.04	Cutoff Lever - Bearing Insert	
Scale 1:2		
Part # TA 9		



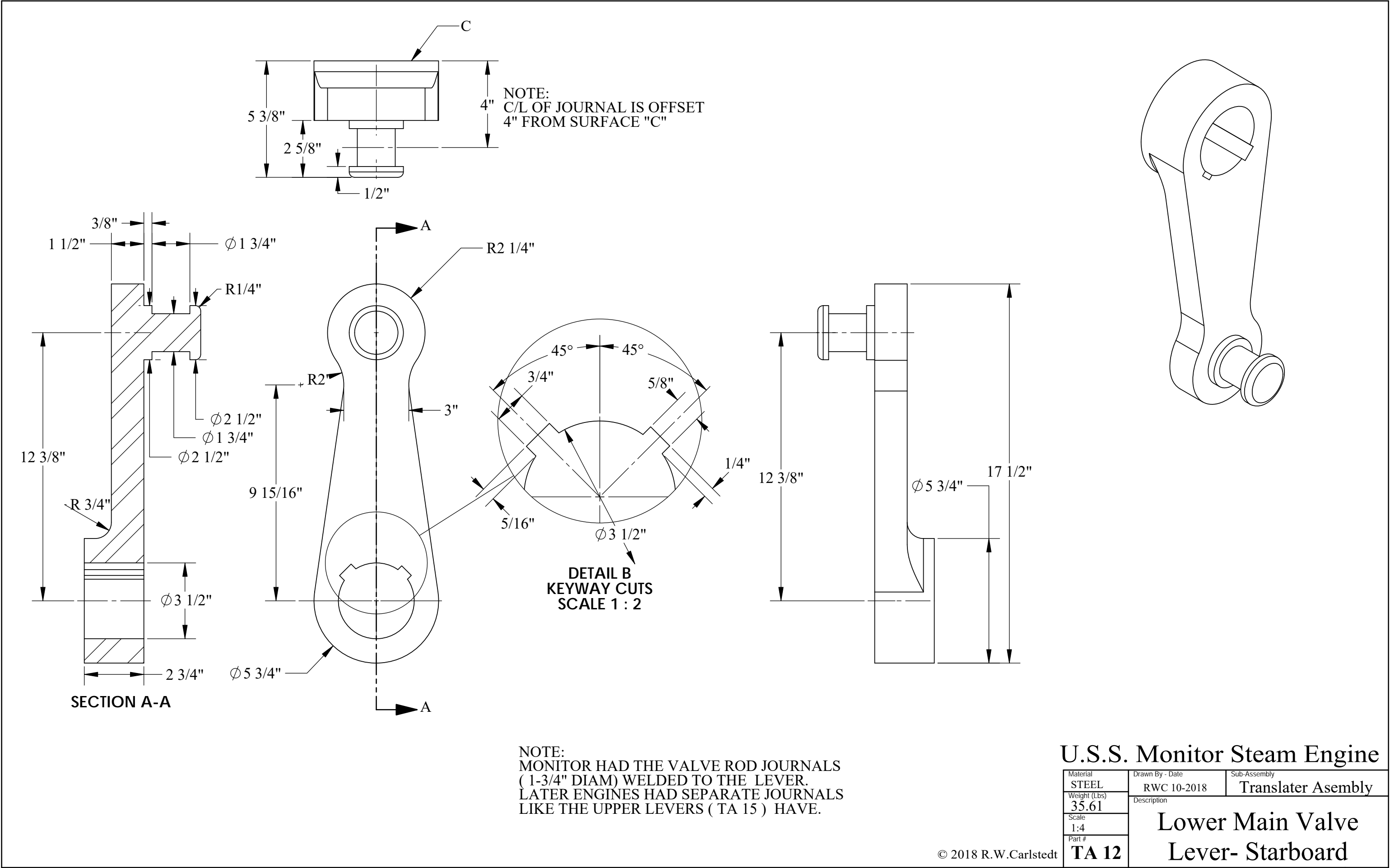
NOTE:  
KEYWAY DETAILS ARE THE SAME  
FOR BOTH PORT AND STARBOARD  
-----  
THE LOWER ARMS ARE KEYED  
DIFFERENTLY TO ALLOW REVERSE  
INSTALLATION

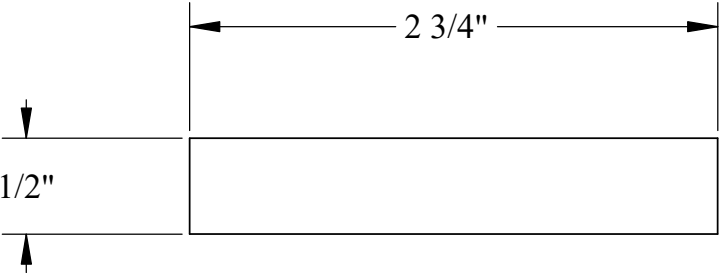
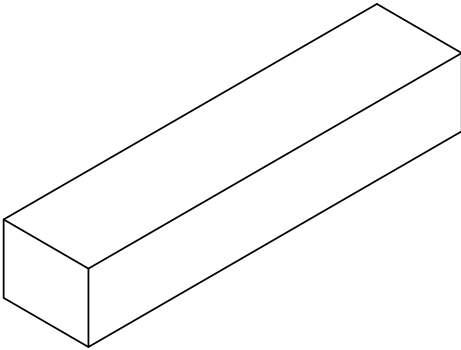
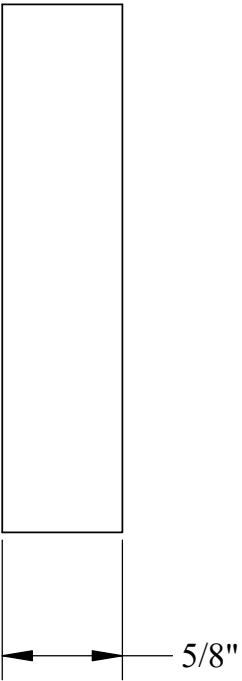
# U.S.S. Monitor Steam Engine

Material STEEL	Drawn By - Date RWC 10-2018	Sub-Assembly Translator Assembly
Weight (Lbs) 78.91	Description MAIN VALVE LEVER	
Scale 1:4		
Part # TA 10		



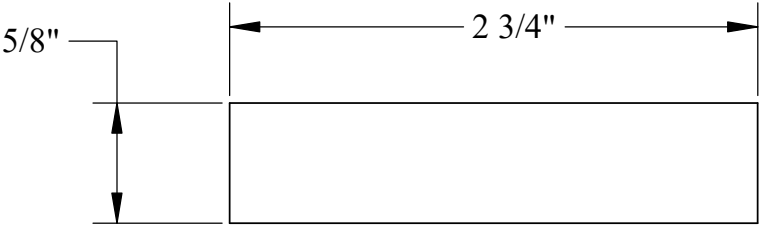
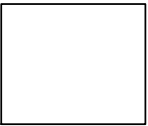
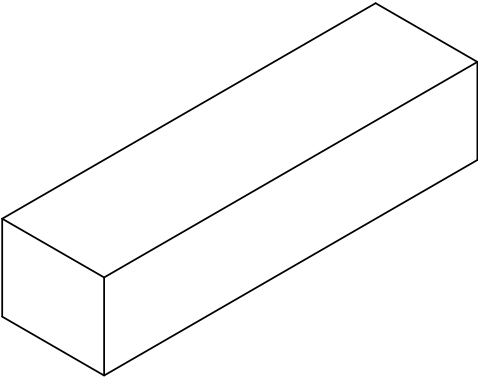
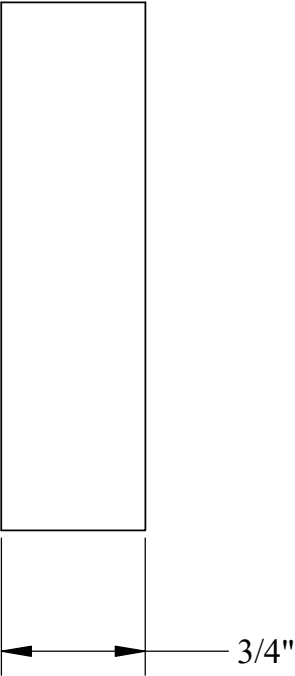






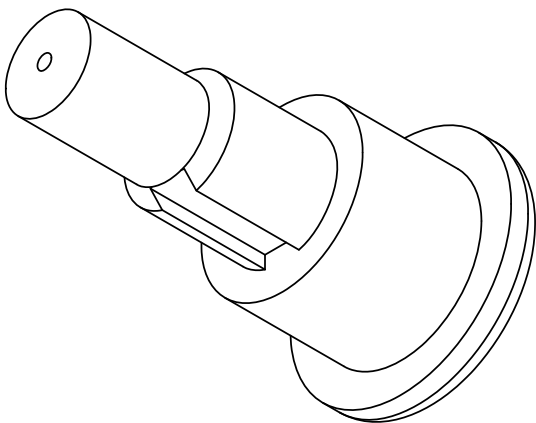
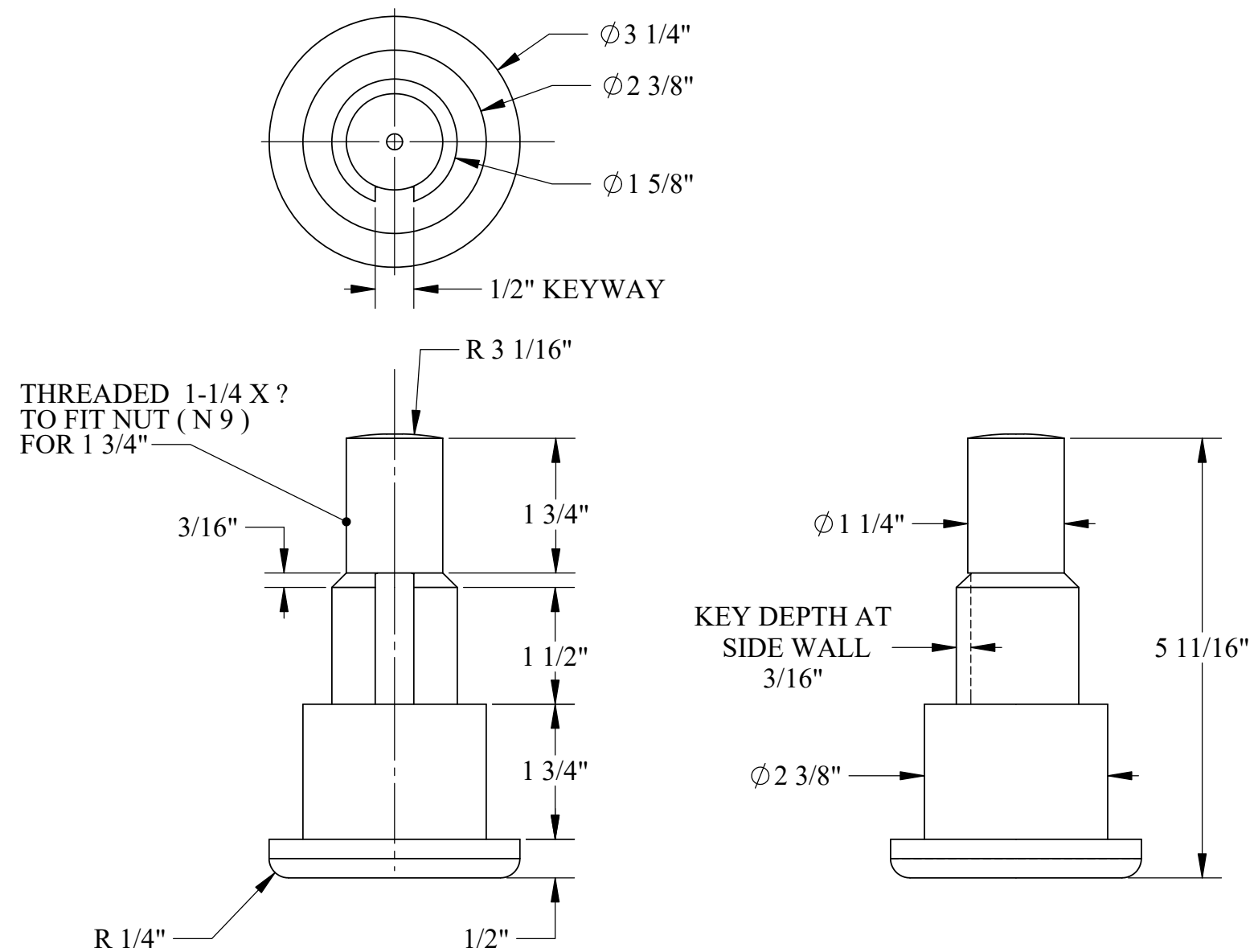
U.S.S. Monitor Steam Engine

Material STEEL	Drawn By - Date RWC 10-2018	Sub-Assembly Translator Asembly
Weight (Lbs) 0.25	Translator Shaft Key- Small	
Scale 1:1		
Part # TA 13		



U.S.S. Monitor Steam Engine

Material STEEL	Drawn By - Date RWC 10-2018	Sub-Assembly Translator Asembly
Weight (Lbs) 0.37	Translator Shaft Key- Large	
Scale 1:1		
Part # TA 14-		

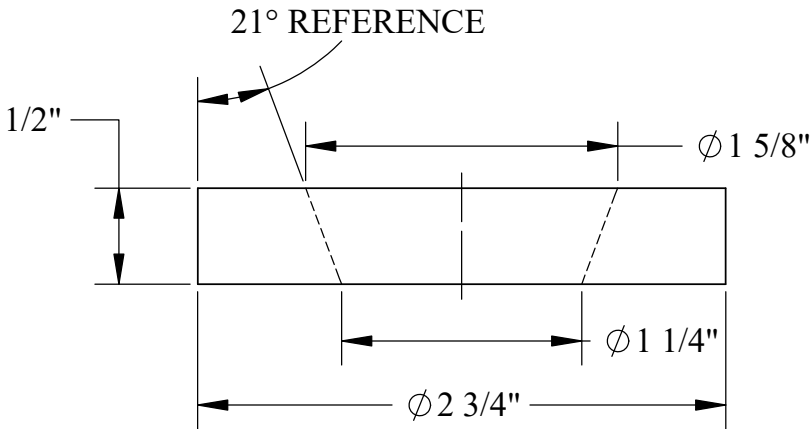
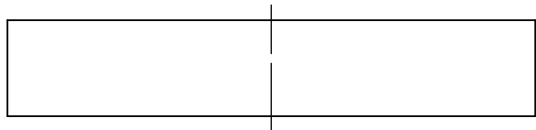
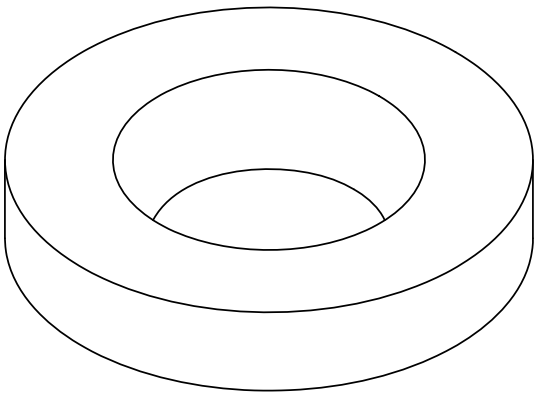
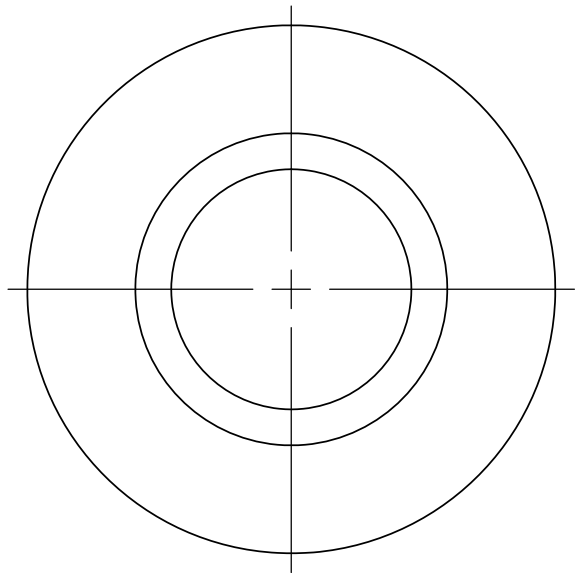


NOTE:  
THE JOURNAL SURFACE IS  
THE  $2\text{-}3/8"$  DIAMETER AND  
WOULD BE POLISHED AS A  
BEARING SURFACE

U.S.S. Monitor Steam Engine

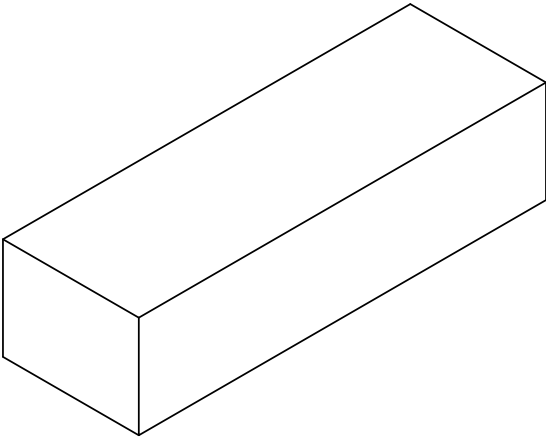
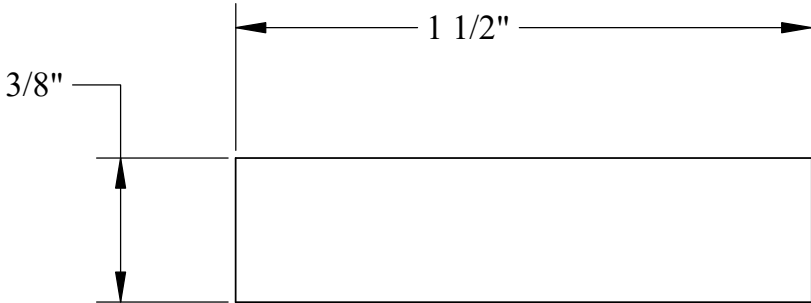
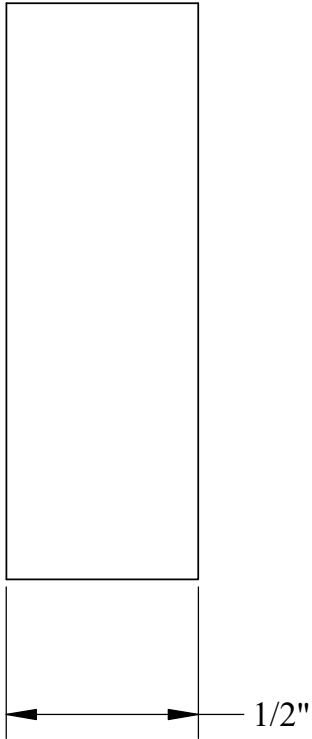
Material STEEL	Drawn By - Date RWC 10-2018	Sub-Assembly Translator Asembly
Weight (Lbs) 4.91	Description Valve Rod Journal	
Scale 1:2		
Part # TA 15		





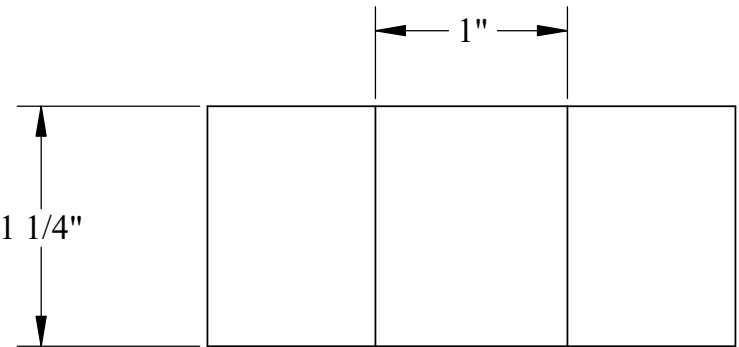
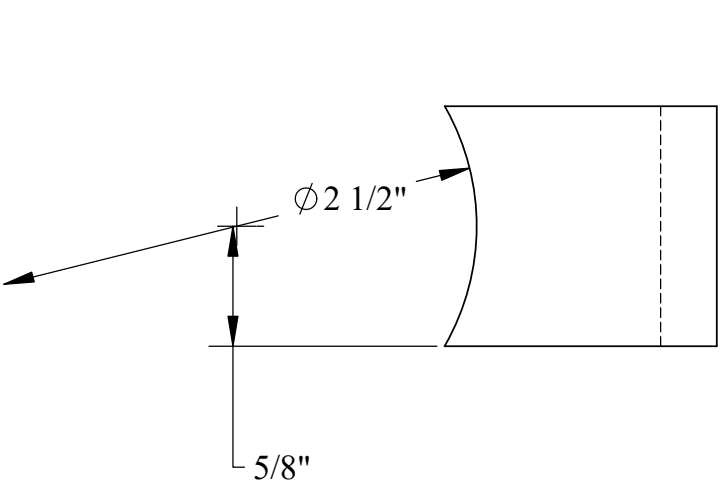
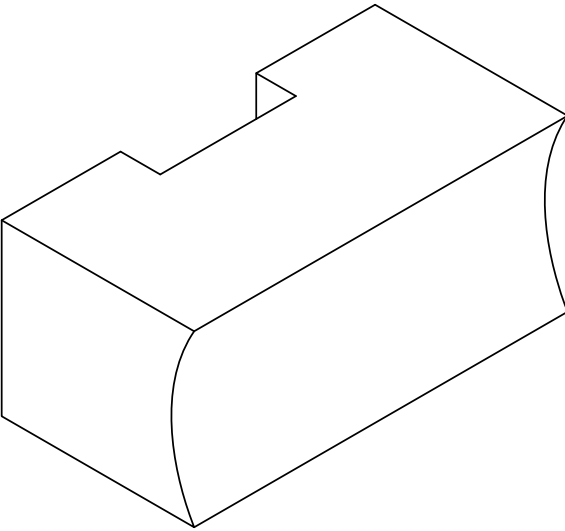
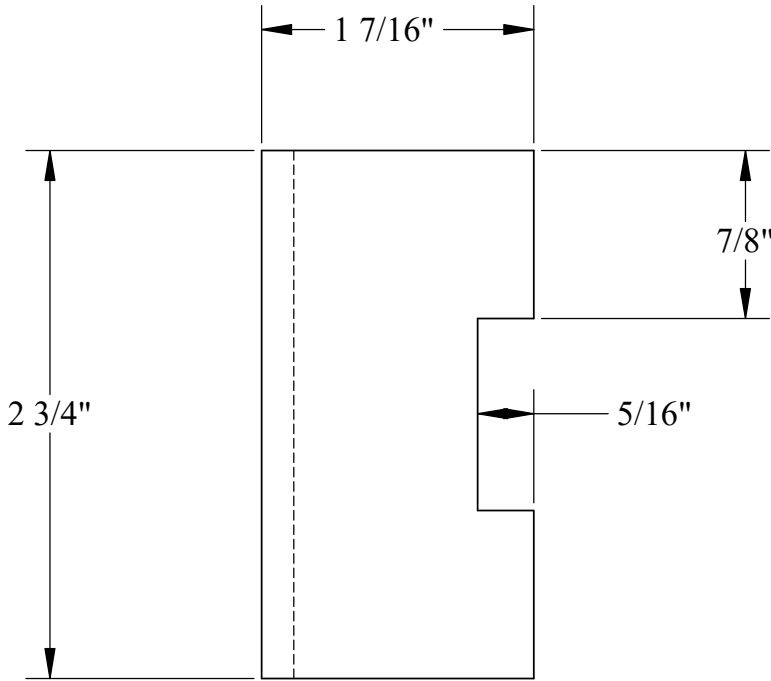
U.S.S. Monitor Steam Engine

Material STEEL	Drawn By - Date RWC 10-2018	Sub-Assembly Translator Asembly
Weight (Lbs) 0.61	Valve Rod Journal Washer	
Scale 1:1		
Part # TA 16		



U.S.S. Monitor Steam Engine

Material STEEL	Drawn By - Date RWC 10-2018	Sub-Assembly Translator Asembly
Weight (Lbs) 0.08	Valve Rod Journal Key	
Scale 2:1		
Part # TA 17		



U.S.S. Monitor Steam Engine

Material Bronze	Drawn By - Date RWC 10-2018	Sub-Assembly Translator Asembly
Weight (Lbs) Bronze	Translator Pillow Block Gib Bearing	
Scale 1:1		
Part # TA 18		